

أرزتنا حلوة مطبوعة
بس أحلى مزروعة
adoptacedar.org

300,000
trees planted





“

A un certain moment de notre vie, on se rend compte que la Terre ne tourne pas autour de nous, que nous ne sommes pas le nombril du monde. Qu'il que l'on soit, quoi que nous fassions, le soleil continuera à se lever, et la terre continuera à tourner.

Nous ne sommes que des passagers temporaires de cette planète bleue et verte sur laquelle se sont passées, se passent et se passeront toutes les atrocités, les guerres et les malheurs mais aussi des bonheurs purs comme celui de donner la vie, des plaisirs des sens et de l'âme, des joies de créer et d'accomplir Ce sont les miracles de l'amour....

Quand on est lucide et pragmatique, on relativise, on se rend compte qu'on ne peut pas corriger le monde et soigner toutes les douleurs, mais qu'avec des actes simples on peut exprimer notre gratitude pour tant d'amour reçu et le bonheur vécu en 10 ans avec 300.000 arbres plantés pour nos enfants et les futures générations.

*Pr Magda Bou Dagher Kharrat
Vice-présidente*



RAOUL NEHMÉ
PRESIDENT OF JOUZOUR LOUBNAN

We are celebrating our 10th anniversary with more than 300.000 trees planted across Lebanon and numerous awareness campaigns and workshops: As for every worthwhile achievement, big or little, **we had our stages of failures and triumphs, we had a beginning, a struggle and a victory.**

A victory we can claim when we see the Cedar trees that have exceeded 5m height in Chabrouh as we watch them grow at a very high pace; when we see other trees fighting the harsh weather in our Jurd and when we see our new forests growing in so many regions across Lebanon.

A victory we can claim when we see the progress we have made in the improvement of our plantation methodologies and techniques and a relatively increased general awareness about the importance of forests.

We are celebrating our 10th anniversary but we are also raising the bar a little higher: let's target 1.000.000 trees planted and many more awareness activities and workshops for the coming 10 years.

Last but not least, let's remember that **we are celebrating 10 years of achievements thanks to the commitment of the Municipalities and Ministries, the dedication of our friends, partners, volunteers, workers and members, and the continuous support of our generous donors.**



Adopt your cedar tree today!

Get a certificate with the GPS location of your adopted cedar tree!*



Get a personalized tag with your name installed on the location of your adopted cedar tree!

Take a picture with your newly planted cedar tree and watch it grow!



Surprise your friends and loved ones by adopting a cedar tree in their name as a gift!

* Ask for your customized certificate design for your **PERSONAL EVENT** (wedding, new born baby, birthday, valentine, ...)

Jouzour Loubnan is a NGO established since 2008 (registration number 491) whose mission is to participate in the restoration of **Lebanese woodland** and promote sustainable reforestation mainly in arid regions. Jouzour Loubnan also focuses on **empowering local communities** to protect, manage and benefit from the plantation projects and **promotes environmental awareness** of natural resources amongst younger generations.

To date (2018), Jouzour Loubnan has planted irrigated and protected more than **300,000 trees** across Lebanon.

CONTACT US

M: +961 71 124 000
F: +961 (0)1 580 732
contact@jouzourloubnan.org

FOLLOW US

Jouzour.loubnan
@Jouzourloubnan

VISIT OUR SITE

jouzourloubnan.org



- P.7 10 YEARS OF COMMITMENT - MEET THE TEAM
- P.13 10 YEARS FOR A LIFETIME MISSION
- P.15 10 YEARS OF GREEN PROGRAMMES
- P.17 10 YEARS OF GENEROUS SUPPORT

01 | INCREASE THE WOODLAND AREA

- P.23 JOUZOUR LOUBNAN'S ACHIEVEMENTS
- P.25 EXPLORE OUR PLANTATION SITES
- P.27 PLANTATION METHODOLOGY OPTIMIZATION
- P.29 10 YEARS IN CHABROUH
- P.31 10 YEARS IN KFARDEBIAN
- P.33 10 YEARS IN EHMEJ
- P.35 CORPORATE SOCIAL RESPONSIBILITY



02 | PLANT WITH A SCIENTIFIC BACKGROUND

- P.41 ENTER OUR LABORATORY
- P.45 INTRODUCING THE BCI - LEB TEAM
- P.47 JOUZOUR LOUBNAN SEED BANK JOINS THE S.E.R.
- P.49 THE SIXTH MEDITERRANEAN FOREST WEEK
- P.53 MIDDLE EAST PARTNERSHIP INITIATIVE
- P.54 FOREST ECOSYSTEM RESTORATION INITIATIVE
- P.57 CHAIRE DE L'ÉDUCATION À L'ÉCO-CITOYENNETÉ ET AU DÉVELOPPEMENT DURABLE (CEEDD)
- P.59 INDIGENEOUS PROTECTED AREAS MAP



03 | PROMOTE ENVIRONMENTAL AWARENESS

- P.65 AWARENESS OUTREACH
- P.67 PLANTATION DAYS WITH STUDENTS
- P.71 OUR SITE CONTROLLER IN THE USA
- P.73 OUR LAB ASSISTANT IN ITALY

04 | EMPOWER OUR COMMUNITIES

- P.84 MEET OUR KEY PARTNERS: THE NURSERIES



United, we plant the trees
for a greener Lebanon

**BASSOUL
HENEINE** SAL

Sed El Bauchrieh 01 684 684

Ain el Mreisseh 01 360 708

Rolls-Royce
Motor Cars



BMW Motorrad



RENAULT
Passion for life



10 YEARS OF COMMITMENT - MEET THE TEAM



MAGDA BOU DAGHER

VICE PRESIDENT

PROFESSION: Head of Life & Earth department, Faculty of Sciences, USJ

EDUCATION: PhD in plant molecular biology, University Pierre et Marie Curie, HDR, Université Paris-Sud

“À Jouzour Loubnan je ne fais que rendre à mon pays, à mes enfants, à mes amis et leurs enfants, à mon échelle l’amour que j’ai reçu de mes parents et du Mont Liban qui m’a fait grandir en sérénité et qui a contribué à l’épanouissement de mes sens et de ma conscience.

Planter des arbres est un acte simple qui à l’échelle de cette grande planète et pendant les femtosecondes courant lesquelles je respire son oxygène, je demande pardon à Mère Nature pour le mal qu’on lui a fait subir et lui exprime ma gratitude pour le bonheur et la sérénité qu’elle me procure.”



HANI HOYEK

PROJECT MANAGER

PROFESSION: Business Development, BLC Bank
EDUCATION: Grande Ecole de Commerce EM Lyon

“I have always wanted to become an Elzeard Bouffier myself. I have been inspired by Jean Giono’s touching tale “The Man Who Planted Trees”. With no means but his curling pole, his simple life and determination Elzeard Bouffier planted trees during most of his life. “His” trees gave birth to a forest, a forest gave birth to a stream, a stream gave birth to a village. Such an elementary but powerfull act.

Yes... we have planted 300.000 trees to date. But this would be only considered a success when every hunter, hiker, shepherd and every Lebanese will respect and protect every tree we plant.

My vision is that in 10 years, a semi-public entity will be formed to group all reforestation initiatives in order to develop and implement a national reforestation, awareness and educational master plan. Jouzour Loubnan, in one word: I act.”



HIBA ABOULHOSN

COMMUNICATION & MEDIA

PROFESSION: Communications Consultant & Partner, KeepItSimple communications
EDUCATION: Masters in Communication, Edinburgh University

“FORESTS never complain, instead they shine with beauty, FORESTS do not take anything from us, instead they give us oxygen and food, FORESTS do not hurt us, instead they give us shade and peace of mind... How can I not give back to FORESTS?”

Jouzour Loubnan is my 4th baby, a baby that we brought to life together with 7 dedicated and committed friends, a baby I’ve been nurturing for the past 10 years.

Jouzour Loubnan is today a strong growing child that has built a circle of sincere friends and rooted supporters. Every mother is proud of her child, but what is special about Jouzour Loubnan, is that every Lebanese is today proud of our child!”



RAMI KOZHAYA

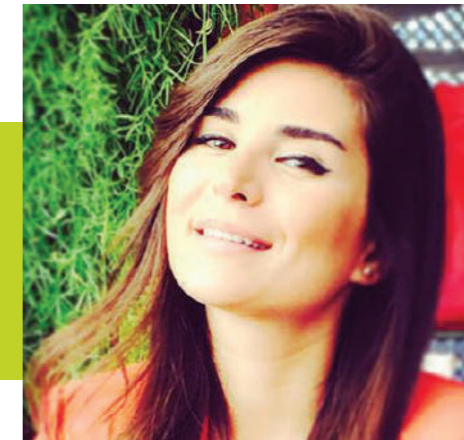
TREASURER

PROFESSION: Head of Alternative Delivery Channels, Bank Audi
EDUCATION: MBA - Management of Financial Institutions, USJ - Sorbonne - Paris Dauphine

“I started as a rescuer at the Red Cross since 1994 for humanitarian cause. I also felt concerned about the environment and believed that I should also be a rescuer of nature. This is why I joined Jouzour Loubnan for the reforestation cause and to help rebuild forests across Lebanon.

One memorable day that I always recall is one of our largest plantation days in 2010 in which more than 500 volunteers, including Scouts of Lebanon, local communities and municipalities, all gathered to plant trees with pride and joy.

Since 2008, the Jouzour Loubnan team spirit which is married to our will to succeed by planting more trees and creating more forests, is a priceless and indescribable experience and feeling. I believe Jouzour Loubnan will be planting in every village in Lebanon within another decade.”



JOELLE SAAB

COMMITTEE MEMBER

PROFESSION: Head of Recycling Unit, DulSCO, UAE
EDUCATION: Masters in Environmental Sciences and Management, USJ

“It all started when my professor offered me the opportunity to assist her in Jouzour Loubnan’s laboratory. I discovered my passion for nature and believed in this mission so I decided to specialise in environment! I am fascinated by how we are able to mobilise people from all ages and sectors in our reforestation activities and how our mountains are growing greener and I feel so proud that I’m part of this effort.

Throughout these years, our biggest challenge has been that most people lack awareness, and ‘reforestation’ seems not to be on their priority list, yet Jouzour Loubnan keeps pushing for greater achievements. Hopefully in 10 years we will have the support of more international and local entities and we’ll be able to restore at least 5% of Lebanon’s lost green cover. Thank you Jouzour Loubnan for making me who I am and thank you for being the green soul of Lebanon.”



FREDERIC KHALIL

MEMBER

PROFESSION: Partner, BEAR
EDUCATION: MBA, USJ - Paris Dauphine

“My grandfather was a forestry operator in the forests of France. As a child, I used to spend time with him exploring new forests and having fun near the lakes and under the shades of the trees. And when I moved to Lebanon, I realised that we have a few forests and that my children won’t have the same opportunity I had during my childhood. So mainly, I choose reforestation to create the same memories I had for my children and future generations and to preserve nature, its ecosystem and biodiversity.

I’ve mostly enjoyed planting trees during many joyful gatherings with my Jouzour Loubnan family and I am very proud of my contribution to the development and promotion of a green programme for the real-estate sector. I hope that in 10 years or more Jouzour Loubnan will cease to exist because Lebanon will be totally covered by trees! Maybe a dream, but everything starts with a dream!”

10 YEARS OF COMMITMENT - MEET THE TEAM



RIDA BOUTROS

PROJECT COORDINATOR

PROFESSION: Project Coordinator, Jouzour Loubnan
EDUCATION: Masters in Biodiversity: Management and Conservation of Natural Resources, Lebanese University



TONY CHAHINE

SITE CONTROLLER

PROFESSION: Site Controller, Jouzour Loubnan
EDUCATION: MS Agricultural Engineering, Lebanese University



ELISABETH NEHME

COMMUNICATION MANAGER

PROFESSION: Communication Manager, Jouzour Loubnan
EDUCATION: BA in Marketing and Advertisement, USJ



FADI NASSIF

GENERAL SECRETARY



GHADA ZEAITER

FORMER TREASURER



CHARLES EL HAGE

MEMBER

PROFESSION: Retired as Senior Vice-president with Booz & Company
EDUCATION: Masters of Science in Industrial Engineering and Bachelor Industrial Management, Purdue University, Indiana, USA



RIAD MOUAWAD

ART DIRECTOR

PROFESSION: Creative Director & Partner, BlackInk - visual communication
EDUCATION: Graphic Design, Notre Dame University



FARID MAALOUF

ENGINEER CONSULTANT

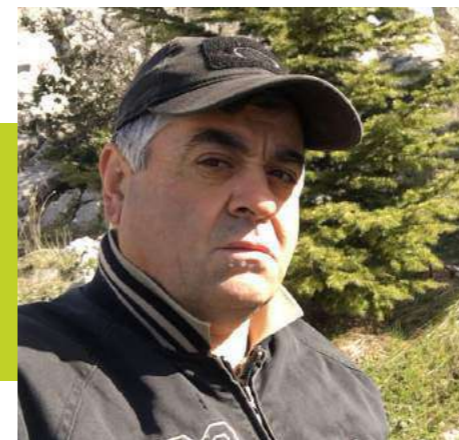
PROFESSION: OTV, Executive Director
EDUCATION: Civil Engineer, ESIB



ANTHONY ROUKOZ

ASSISTANT LAB

PROFESSION: Assistant Lab, Jouzour Loubnan
EDUCATION: Environmental sciences and management- SGE, Master 2, Faculty of Sciences, USJ



MAROUN GEBRAYEL

**SITE SUPERVISOR
JEZZINE**



ROGER AKIKI

**SITE SUPERVISOR
KFARDEBIANE**



NASSIM FARHAT

**SITE SUPERVISOR
EBL EL SAKI**



JGROUP



www.jgroup-me.com



الجديد television

www.aljadeed.tv [@aljadeednews](https://twitter.com/aljadeednews) [f aljadeedonline](https://facebook.com/aljadeedonline) [@aljadeedtv](https://instagram.com/aljadeedtv) [aljadeedonline](https://youtube.com/aljadeedonline)



10 YEARS FOR A LIFETIME MISSION

WE HAVE CHOSEN TO INTERVENE MAINLY IN ARID MOUNTAINOUS REGIONS AS, ON ONE HAND, THEY ARE VERY OFTEN DISMISSED IN FORESTATION PROGRAMS AND, ON THE OTHER HAND, THE BENEFITS OF SUCH FORESTATION ARE TREMENDOUS.

The success of our forestation campaigns resides in our commitment to ensure the appropriate irrigation, guardianship and protection of the trees we plant. This success can be difficult to achieve, more so in arid regions due to extreme weather conditions, lack of surface water, poor soil quality and overgrazing. In order to overcome the issues at hand, we devised a special program taking into account, for each region, all the technical and socio-economic aspects related to such complex environments. As a result,

JOUZOUR LOUBNAN HAS THREE INTERCONNECTED GOALS



PLANT
MAINLY IN
ARID REGIONS

Increase
the woodland area in Lebanon by planting indigenous species to restore degraded high mountain ecosystems and develop wildlife habitats.



EMPOWER
LOCAL
COMMUNITIES

Empower
the local community to protect, manage, promote and benefit from the projects.



PROMOTE
ENVIRONMENTAL
AWARENESS

Promote
environmental awareness of our natural resources amongst younger generations, locals and officials.

FOR MORE INFORMATION, PLEASE CONTACT US:



www.jouzourloubnan.org



contact@jouzourloubnan.org



00 961 71 124 000

نزرع أرز الغد، اليوم

بنك بيبلوس

في ظل المعلومات المقلقة عن تراجع عدد أشجار الأرز في لبنان، أطلق بنك بيبلوس عام 2014 "مبادرة بنك بيبلوس لتجريب الممر الحيوي في محمية أرز الشوف". وقام المصرف بزراعة عشرة آلاف شجرة أرز في هذا الممر الحيوي ستشكل صلة وصل بين غابتي أرز الباروك ومعاصر الشوف من جهة وغابات السنديان في أعالي بلدة عميق البقاعية من جهة أخرى. ويعود التزام بنك بيبلوس بحماية رمزنا الوطني إلى العام 2005 حين أطلق المصرف برنامجاً إستراتيجياً لزراعة شجر الأرز.

GREEN PROGRAMMES

As we are all concerned by the fast desertification of the Lebanese woodland heritage caused by both natural and man-made reasons, reforestation efforts are the responsibility of everyone. Whether employees or owners of businesses, parents or children, journalists or professionals in any sector, decision makers or activists; **we all have a role to play!**

The Jouzour Loubnan team wants to integrate every citizen in our mission; and for that purpose we have developed several programmes tailored to different sectors and target groups. We invite you to join our reforestation efforts and spread the word to create more awareness on the necessity to create and protect our forests.



CORPORATE PROGRAMME

Corporate events, which can also be part of their CSR programme, have been extremely well received by our generous supporting partners to date. They are **exciting team-building activities which also raise awareness about the importance of protecting and increasing our woodland heritage.**

Below the activities that the Jouzour Loubnan team can offer separately or jointly under this programme:

- Sponsor a plantation site or a number of trees to be planted;
- Receive a plantation certificate in the name of each employee with the GPS coordinate of the adopted tree and/or a certificate of the plantation site in general in the name of the company;
- Gather the employees and their families in a fun outdoors team-building event to plant the sponsored trees;
- Organise awareness sessions with the employees promoting the benefits of reforestation;
- Promote this green partnership externally with the general public through mediatised tools and events.



REAL ESTATE PROGRAMME

It has been such a reward to partner to date with more than 4 real-estate developers in this programme: **1sqm of newly created forests for 1sqm built.**

Below the activities that the Jouzour Loubnan team can offer separately or jointly under this programme:

- Sponsor a surface of newly created forest equal to the surface of sold/built sqm monthly or quarterly. The developer will receive a certificate of plantation (monthly or yearly) in the name of the company with the GPS location of the newly planted site;
- (or) Encourage the buyer to contribute to the creation of newly created forests for the surface of his/her newly purchased home. The owner of the house will receive a certificate of plantation in his/her name with the GPS location of the newly planted site;
- Use of Jouzour Loubnan logo in the company's promotional and marketing material and campaigns;
- Promote this green partnership on available communication channels.



ADOPT A CEDAR PROGRAMME

The 'adoptacedar.org' initiative was initiated based on the request of many individuals who wished to support Jouzour Loubnan's mission but weren't able to physically be present. However, within less than a year this initiative evolved rapidly and started taking many shapes and forms, such as a wedding or birthday wish list, a new baby born's 'cadeau de retour', a memorial, or even a wedding proposal. It also brought many Lebanese living outside Lebanon to adopt their own tree and visit it when in Lebanon.

Anyone... Anywhere... can today adopt a Cedar in Lebanon with just a click!

- Receive a digital certificate with the GPS coordinates of the adopted tree within 48 hours;
- Create an event wish-list on the 'adoptacedar.org' site for friends and family;
- Personalise the certificate design to fit the event's theme;
- (Optional) Personalise an engraved metal tag to be placed on the adopted tree;
- (Optional) Receive a picture of the tag and tree by email.

Jouzour Loubnan replaces any tree which does not survive its new environment. **Each adoption will help plant, nurture and protect more *Cedrus libani* trees.**



CAR DEALER PROGRAMME

The car dealers' reforestation program is simple and extremely affordable: **One tree planted for each new car sold.** Jouzour Loubnan started this green initiative with one car dealer with the objective that soon enough every newly purchased car in Lebanon would create a traffic of trees in our deserted mountains.

- Receive a plantation certificate in the name of the new car owner with the GPS coordinate of the planted tree;
- (or) Receive a yearly plantation certificate in the name of the car dealer company with the GPS coordinate of the plantation site in which all of the trees have been planted;
- Receive a special designed sticker that can be placed on the car saying "I just planted a tree";
- Promote this green partnership externally with the general public through mediatised tools and events.



STUDENTS SUPPORT

Jouzour Loubnan encourages students to participate and volunteer in its activities. A letter certifying participation is offered to each student accordingly. Well rooted partnership with USJ university students and Melkart school students is forming generations while offering great support to Jouzour Loubnan.



MEDIA SUPPORT

Journalists and media outlets are key and essential to reach out to the general public and communicate Jouzour Loubnan's mission. Long term partnerships have been established to date, and Jouzour Loubnan relies on this sector to spread its awareness messages.



POLITICAL SUPPORT

Every decision maker can assist in the political awakening of the Lebanese government and its commitment to implement a sustainable and effective reforestation plan within the regulatory field, the application of the law or the protection and development of our woodland heritage.

“



Since 2008, with the collaboration of Jouzour Loubnan, Le Charcutier believed in the restoration of the Lebanese woodland.

Our favorite part is knowing that we contribute in increasing the forest area in Lebanon by planting original species and restore degraded high mountain ecosystems and develop wildlife habitats.

Le Charcutier has become a part of the emerging corporate Green family and is committed to contribute towards raising the awareness on saving the environment.

We wish that we would be able to inform and enable the business community on ways to become environmentally friendly in an economically feasible manner to preserve the environment.

”



“



Banque Libano-Française (BLF) recognizes it has a responsibility to conduct its business in a sustainable manner. Therefore, it continuously strives to launch initiatives to combat climate change and protect the environment.

BLF was the first bank in the MENA region to establish a partnership with the International Finance Corporation (IFC) to promote Sustainable Energy Finance. It also launched in 2011 the first eco-friendly credit card in Lebanon with UNDP and MasterCard along with annual competitions around sustainability themes, such as the annual “Climate Change Student Competition” with the AUB Issam Fares Institute.

Among the partnerships dear to its heart, BLF has supported Jouzour Loubnan since its foundation in 2008. In addition to contributing to the reforestation efforts of Jouzour Loubnan, reaching today a total of 4.767 trees planted with a total donation of USD 71,500, it has supported in 2013 the laboratory for seed germination and conservation of several types of trees (Cedars, Poplars and Junipers) in more than 10 Lebanese regions such as Kfardebian, Chabrouh, Ehmej, Tarchich...

BLF is very proud of its partnership with Jouzour Loubnan as the mission and goals of the association fall in line with the Environmental Pillar of the Bank’s CSR strategy. It also values the relentless determination of Jouzour Loubnan’s Chair, Raoul Nehme, to work for the sustainable development of Lebanon and promote environmental awareness for the country’s natural resources amongst younger generations, locals and officials.

Tania R. Rizk
Director of Group Communications,
CSR and Customer Experience Division
Banque Libano-Française

”

“



BLC Bank has had the honor to be part of Jouzour Loubnan’s adventure since the very beginning and for the past decade, one tree at a time.

Ten years and thousands of trees later, what started as a momentum to make a change across the country took root and started bearing fruits, with entire forests speaking for themselves.

Preserving our environment is the first step to insuring a sustainable tomorrow.

We couldn’t be more proud to see the impact the Jouzour Loubnan planting initiatives have had on increasing Lebanon’s woodland and spreading the green culture.

”



“



Erga has long been committed to serving the environment and the society before the concepts of Green, Sustainable Development and Corporate Social Responsibility.

We were doing it for a long time, intuitively, considering we have a duty toward the environment and the society we have been gaining so much from and that we need to give in return.

What would be a better way to cover this purpose other than sharing our ambition with Jouzour Loubnan and its president Raoul Nehmé. That is what encouraged Erga to backup Jouzour Loubnan in this journey participating for years with our staff members and their families in plantation days planting each year more than 800 Cedar and Juniper trees in many regions in Lebanon.

Planting a tree, a simple act; but a magical feeling beyond words; connecting you to mother earth. It is so powerful that you can’t describe it unless experienced by yourself. What would be a better way of seeing life other than digging and putting a tree in the soil with your bare hands and taking care of it in the name of Lebanese future generations? A mission transmitting to us positive energy and vibrant life within Erga. It helps our staff relax and feel proud of what they are achieving with their kids and what the company is offering them as quality time. It really helped our staff socialize with each other in a different perspective than their daily routine and it was really beneficial from all aspects thanks to Jouzour Loubnan.

Elie Gebrayel
Chairman and CEO
ERGA GROUP SAL

”



BECAUSE OUR CHILDREN DESERVE A SUSTAINABLE WORLD THAT EMBRACES THEIR DREAMS

At BLF, we aspire to be more than just a leading bank. We want to create shared value by making a positive social and environmental impact in our workplace, marketplace and community. Why, you might ask, is a bank taking on all of this? Because we are keen on fostering sustainable economic development and committed to a better future where we can embrace our children's dreams and partner with their ambitions too.



**BANQUE
LIBANO-FRANÇAISE**
A partner for your ambitions

01/03 791332 | Short N°: 1332 | Call Center: 1272

info@ebf.com | www.ebf.com/en/csr



INCREASE THE WOODLAND AREA

JOUZOUR LOUBNAN'S ACHIEVEMENTS

SINCE 2008, WE HAVE...

PLANTED 302,199 TREES

ON MORE THAN 5 MILLION AND HALF SQM, I.E. 540 HECTARES, IN MORE THAN 20 REGIONS ACROSS LEBANON;

CREATED A SEED BANK LAB WHICH INCLUDES:

OVER 26 MILLIONS SEEDS; 310 SPECIES; AROUND 700 POPULATIONS; AN AVERAGE OF 500 SEEDLINGS GERMINATED EACH YEAR; 5 GROWN RHIZOMES;

INITIATED GREEN PROGRAMMES FOR:

REAL ESTATE DEVELOPERS; CAR DEALERS; COMPANY CSR; ONLINE CEDAR ADOPTION; GREEN SCHOOLS;

DESIGNED AND LAUNCHED 7 CONSECUTIVE NATIONAL AWARENESS CAMPAIGNS;

7 ANNUAL MAGAZINES; 7 SUCCESSFUL FUNDRAISING EVENTS;

ORGANISED AWARENESS SESSIONS AND WORKSHOPS

TO SCHOOL AND UNIVERSITY STUDENTS, SCOUTS, YOUTH CLUBS, CIVIL DEFENSE, MUNICIPALITY MEMBERS;

PARTICIPATED IN AND CONTRIBUTED TO:

FAIRS, EXHIBITIONS, LOCAL AND INT'L WORKSHOPS, SEMINARS, LOCAL TV TALK SHOWS AND RADIO PROGRAMMES.

لبنان
أكثر من 65 سنة

ALL OF THIS WAS MADE POSSIBLE THANKS TO A TEAM OF 19 DEDICATED MEMBERS AND HUNDREDS OF DONORS, SUPPORTERS AND FRIENDS OF JOUZOUR LOUBNAN

Plantation Site	Seedlings Planted	Surface (ha)	Plantation period
Kfardebian	161,105	300	2008-ongoing
Chabrouh - Faraya	7,884	8	2008-ongoing
Ehmej	10,300	15	2009-2016
Aynata	10,099	22.2	2010-2012
Harf Shlifa and Btedii	26,950	46.35	2011-2014
Ebl El Saki	21,885	40	2012-ongoing
Zaarour	2,800	15	2013-2016
Ehden - Zgharta	5,600	7.1	2012-2016
Balaa	100	0.5	2014
Damour	2,500	5.7	2014 and 2017
Jezzine	49,942	52	2015-ongoing
Sarada	200	10	2017-ongoing
Jaj	300	10	2017-ongoing
Bcharre	200	10	2017-ongoing
TOTAL	302,199 SEEDLINGS	PLANTED ON A SURFACE OF 541.85 HA	IN 10 YEARS

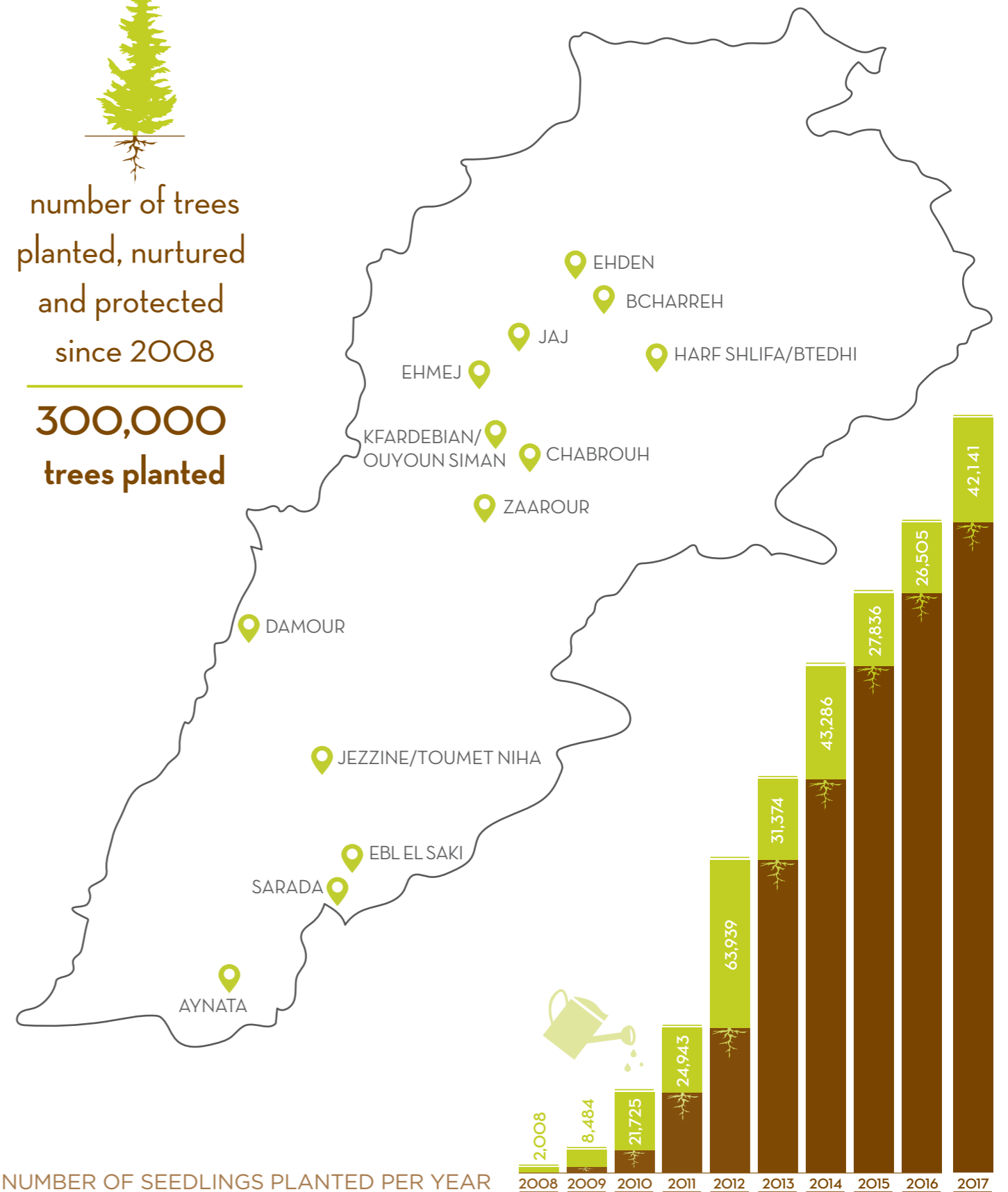
لبناني ودايماً حذك

EXPLORE OUR PLANTATION SITES



number of trees
planted, nurtured
and protected
since 2008

300,000
trees planted



NUMBER OF SEEDLINGS PLANTED PER YEAR

The new technique consists of installing a spiral metallic device called post holes digger auger to a heavy-duty excavator and use it as an efficient alternative for both earth auger and hand digging.



The excavator can work for 8 hours in a row and can open a planting hole in less than 30 seconds comparing to the 5 minutes needed for the hand auger and the traditional hand digging using spades and hoes.

The easily reached 60 cm depth is beneficial to the seedlings sowing because it will ensure better soil conditions for root growth, better water draining to the roots, and additional water storage.



PLANTATION METHODOLOGY OPTIMIZATION



Throughout the tremendous efforts of reforestation in Lebanon aiming at restoring and increasing its native biodiversity and green landscapes, Jouzour Loubnan has been eager to explore, adopt and adapt advanced and innovative plantation techniques to Lebanon, with the ultimate purpose of providing sustainable reforestation at a reasonable cost.

Despite its small size, Lebanon grasps some of the most diverse ecosystems in the accentuated high mountains, with extreme variability in climate and soil conditions. While this diversity places Lebanon at the core of the largest biodiversity hotspot in the world, countless unmanaged and unsustainable exploitation of the natural resources (i.e. socio-economic, grazing, deforestation, wildfire, urbanisation...) exercised extreme pressure over the Lebanese woodland. Along with the noticeable impacts of climate change, the reforestation efforts in Lebanon face indeed a set of serious threats and constraints hindering the success and sustainability of this restoration approach.

In order to optimize the reforestation techniques, Jouzour Loubnan have tried using a new technique for digging reforestation holes in kfardebian in the 2017 planting season.

The new technique consists of installing a spiral metallic device called post holes digger auger to a heavy-duty excavator and use it as an efficient alternative for both earth auger and hand digging. The auger is composed by a metallic spiral able to pivot and has different sizes in diameter (20 - 30 cm) and in length (60 - 100 cm) and very resistant to frame to connect it to the power equipment.

In term of efficiency the comparison between the excavator auger and the earth augur showed a clear dissimilarity. In fact, unlike the hand auger that regularly needs fuel changes during a working day, the excavator can work for 8 hours in a row and can open a planting hole in less than 30 seconds comparing to the 5 minutes needed for the hand auger and the traditional hand digging using spades and hoes.

On other hand the use of excavator in reforestation practices can cope with the site topology constraint that may block the access of worker to some reforestation suitable spots and it also ease the digging regardless of the type and structure of soils.

Other main advantage is in the quality of dug hole by excavators comparing to the hole done by traditional methods. The easily reached 60 cm depth is beneficial to the seedlings sowing because it will ensure better soil conditions for root growth, better water draining to the roots, and additional water storage. In terms of cost it allows to save manpower and fuel consumption. In fact, 1-day excavator can replace 8-man days.

The results can be proved by the higher survival rates noted in the plantation site of Kfardebiane where we have tried this equipment in the fall season of the year 2017.

Additional observation will be evaluated after 2 growing seasons to confirm the accuracy of the noticed results.

GET CREATIVE, EVERYBODY'S WATCHING

DOUZENetworks

YOUR EFFECTIVE OUTDOOR
ADVERTISING SPACE

INCREASE THE WOODLAND AREA

10 YEARS IN CHABROUH

A SUCCESSFUL EXPERIENCE...

Seedlings planted:
7,884
Land surface:
8 hectares
Plantation duration:
2008 - ONGOING
Seedlings species:
Cedrus libani
Site Altitude:
1,620m



As we were hiking next to the Chabrouh dam 10 years ago, we noticed it was **protected from grazing** and thought it would be a **great site for reforestation**. The Ministry of Energy and Water offered immediately to assist us in our endeavor.

We planted thousands of 20cm Cedar trees as well as fifty 1m-tree that we had acquired from Sir El Dennyé. On one hand, the ambient humidity and lack of grazing provided an excellent environment for the trees to grow in, but on the another hand the quality of the soil was far from being ideal.

Through our special plantation and nurturing programme, the reforestation was successful and surprisingly, it is almost impossible today to identify which trees were initially 20cm height and which ones were 1m tall.

Another surprise was waiting for us on that site: unfortunately it seemed that one of the 1m trees had not survived the harsh weather after a few months. Unexpectedly, three years later, we were thrilled to notice that some small green needles had started growing around that tree.

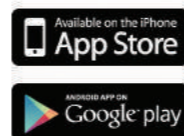
We obviously have a lot to learn... and will always have!



العاب تضيء لك الدنيا!



La Libanaise  des Jeux



INCREASE THE WOODLAND AREA

10 YEARS IN KFARDEBIAN



Seedlings planted: **161,105**
 Land surface: **300 hectares**
 Plantation duration: **2008 - ONGOING**
 Seedlings species: **Cedrus libani**
Juniperus excelsa
 Site Altitude: **2,000 - 2,100m**

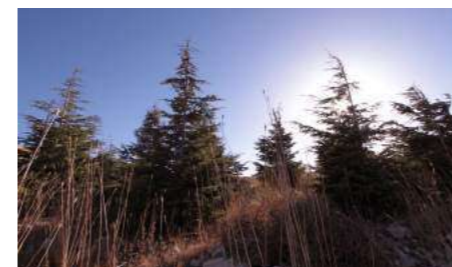
“TERRAIN PRESIDENTIEL”, OUR STORY

Our story starts...

In 1999, the Municipality of Kfardebian fenced and planted, under the patronage of General Michel Sleiman, a large number of Cedar trees on a 10.000 m² of municipal land. Unfortunately, due to lack of maintenance the Cedar trees were made food to sheep and goats.



In 2008, Jouzour Loubnan rehabilitated the fence, planted 570 additional Cedar trees with 250 over 1m height and installed a drip irrigation system. During this period, we started running tests in order to develop our plantation protocols and define optimized methodologies. And the idea of having a protected area started to make its way in our mind. The survival rate of the seedlings was more than 85% and we faced no issues with the shepherd so we decided to extend this test to a much bigger scale.



*In 2010, the Jouzour Loubnan team did lots of scouting to explore the best site extension possible to the initial fenced area in terms of orientation, elevation, steepness ... and ended up with a 465.000 sqm. Having little experience in the preparation of such plantation surfaces, they asked for the technical support of Bureau Technique pour le Developpement (BTD), and Mr. Tony Komati offered his support. So again, we walked and walked the terrain with Tony. The latter prepared a combined topographic / satellite map showing the ideal borders and spots to install the fence, make a service road, install water tanks and plant based on the different elevation zones. Also based on the same map Jouzour Loubnan signed an agreement with the municipality of kfardebian whereby they will not deliver any type of permit for the coming 99 years. **The site extension was inaugurated on the same year by General Michel Sleiman, President of the Lebanese Republic at that time, hence the name “terrain présidentiel”.** The whole terrain was then planted with an average with 15 sqm of surface around each planted tree. **9 years later, the Cedars and Junipers have beautifully survived in most of the areas of the terrain.***



What really matters is that we've created a protected area where the fence is no longer the wire but the local population, where our trees are growing naturally at their own pace and where more than 2000 person contribute to the biodiversity of this site and understand its value.

Moreover, scientific studies were conducted within the site to elucidate the impact of grazing on natural soil seeds bank and the possibility for long term grazed areas to recover. The fenced area has recovered a wide range of its fauna and flora, a biodiversity which had no chance of survival prior to the birth of this project. In fact, **more than 40 plant species were identified some of which are endemic to Lebanon like *Vinca libanotica*, *Acantholimon libanoticum*, *Puschkinia scilloides libanotica*, *Berberis libanotica* etc.** Hence terrain presidential became the number one spot to beekeepers.

One day... the Jouzour Loubnan's dream to create bio-corridors that connect Kfardebian to Bcharre might come true!


Growing seeds with IT Innovation



INCREASE THE WOODLAND AREA

10 YEARS IN EHMEJ

A DEDICATED LOCAL COMMUNITY



- Seedlings planted: **10,300**
- Land surface: **15 hectares**
- Plantation duration: **2009 - 2016**
- Seedlings species: **Cedrus libani; Juniperus excelsa; Quercus sp; Rosa sp**
- Site Altitude: **1,550 - 1900 m**



IT ALL STARTED IN 2008

Our first meeting with the municipality was in 2008, as we scouted the site together to explore the terrain. The project started in 2009, following a contract signed between Jouzour Loubnan and Ehmej municipality ensuring the protection of this newly initiated plantation site.

The first plantation took place at Ad-Dichar site, where 500 Cedars and Junipers trees were planted, opening the way for additional thousands of trees planted in the following 10 years.

10 YEARS OF PLANTATION, NURTURING, PROTECTION AND MAINTENANCE

Jouzour Loubnan was responsible of the protection, irrigation and full maintenance of the surviving trees for the first 4 years of the project. Later on, the municipality adopted the plantation site and continued its reforestation efforts.

In addition to the reforestation project and in collaboration with the Faculty of Sciences at USJ, Jouzour Loubnan and Ehmej municipality worked closely for the preservation and the protection of the natural site of Ed-Dichar to conserve the endemic species found in this region of Lebanon, mainly the *Iris sofrana*, in order to protect the region's biodiversity and its ecosystem.

A DEDICATED AND INVOLVED MUNICIPALITY

The close monitoring from Jouzour Loubnan team, the clear communication with the municipality team, the direct and constant involvement of the president of the municipality as well as the full dedication of all concerned local parties of the project, made this site a very successful one and an example to follow in many other projects in different regions of Lebanon.

TODAY, A NEW FOREST IN EHMEJ

More than 10,300 trees are surviving and growing today in the plantation site. The municipality has prepared 3 artificial lakes near this newly created forest. Our reforestation efforts have been also reinforced by other green initiatives initiated by the municipality in collaboration with other programmes, hence our new forest keeps growing.

ABOUT EHMEJ - Ehmej plantation site shelters an incredible biodiversity with many rare and endemic species to Lebanon and to the eastern Mediterranean region. Different types of natural habitats are present in the same area. The biological diversity varies depending to the slope steepness, slope orientation, and soil depth. The bedrock constitutes of calcarenite, a limestone composed of sand-size grains which is easily eroded and forms a sandy soil on the bottom of the slopes. Besides, many rare animals that need a typical mountainous habitat are found there, including birds, reptiles and mammals.

There is no better future
without Corporate

Responsibility

We, at BLC Bank, have adopted Corporate Social Responsibility as one of our core values, where transparency, accountability and ethics lie at the heart of each action we take.

We aim to make a difference in four areas: our Business, our Community, our Environment & our People. We believe in women and their power, SMEs and their potential, green practices and their criticality and our people and their development.

This has led us to become a Bank of reference for sustainable initiatives of which we proudly state our influence on the creation of women empowerment programs in more than forty countries across the globe, our commitment to our employees' advancement, equality and diversity, our head office's retrofit granting us the ARZ-Bronze certification, and our contribution to the UNGC's 2030 Agenda for sustainable development for the wellbeing of our community.



CORPORATE SOCIAL RESPONSIBILITY

We are all concerned by the fast reduction of native woodland areas in Lebanon, but every contribution makes an impact to the reforestation effort.

Besides donations, Jouzour Loubnan partners with businesses who want to give back to their environment and their society through their CSR programmes.



SAB



Badri and Salim Meouchi Law Firm



BLF



Deloitte and Touche



Technica

Malgré toute déchirure humaine,
les feuilles pourront respirer du vert...

ma.saha
Curieux de Fleurs ...

| Wedding & Event decoration |
| Landscaping | Art Installation |

Tel: (+961) 4 401 945
M: (+961) 3 249 766 | (+961) 70 235 444

Mansourieh, New Highway

✉ info@masaha.me

🌐 www.masaha.me

📘 MaSaHa

📷 MaSaHaDesign

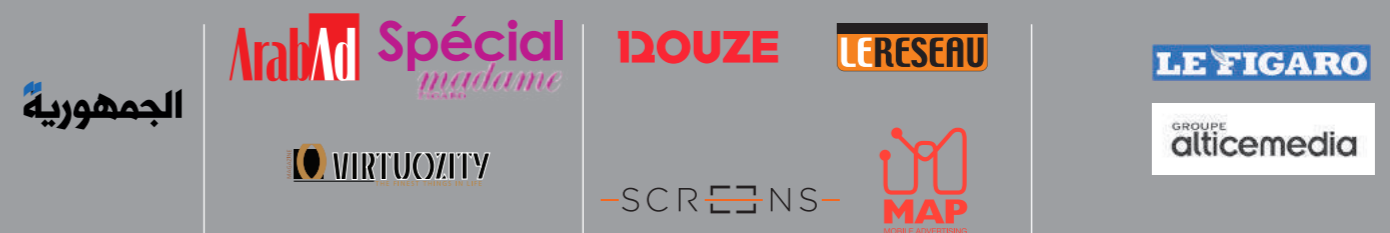
Naturally Evolving

Al Joumhouria • ArabAd • Douze • Groupe Altice Media • Le Figaro • Le Réseau • MAP • Screens • Spécial Madame Figaro • Virtuozity

*The tree is a slow, enduring force
straining to win the sky*
Antoine de Saint-Exupéry,
The Wisdom of the Sands



Exclusive Media Representative



Beirut • Dubai
www.treed.com
info@treed.com



PLANT WITH A SCIENTIFIC BACKGROUND



ENTER OUR LABORATORY



Jouzour Loubnan in partnership with Saint Joseph University

CONTEXT

The regeneration and management of woodlands in the Mediterranean needs particular attention: the role of plant cover is essential for mitigating desertification processes.

Reforestation is often limited to a narrow number of species which are easy to grow in nurseries. This practice greatly reduces levels of biodiversity and it is even more worrisome with regards to shrubs and minor hardwood which are the greater part of the Mediterranean woody flora.

Beside Cedars and Junipers, many other trees of economic and/or of ecological interest are present in Lebanese mountains. Restoring these ecosystems requires the use of dozens of plant species to rebuild strong and resilient ecosystems. Recent international research results highlighted the positive effects of biodiversity.

Unfortunately, there are few nurseries producing Lebanese native species. Learning how to propagate these 'new' plants properly, including those deserving a wider use as drought-tolerant, can be a great challenge as well as a powerful tool to combat desertification and enhance biodiversity.

In this context, Jouzour Loubnan took the initiative in 2009 of creating the LABORATORY FOR SEED GERMINATION AND CONSERVATION (LSCG) in partnership with the Faculty of Sciences of Saint Joseph University.

Our Laboratory is located at the Campus of Science and Technology (CST) of Saint Joseph University (USJ), Mar Roukoz, under the direction of Pr. Magda Bou Dagher Kharrat and the Laboratory assistant Anthony Roukoz.

ACHIEVEMENTS

To date, 246 taxa and 703 accessions of native species were collected in the wild according to predefined scientific protocols respecting a minimal number of plants and a minimum distance between contributing plants.

PLANT WITH A SCIENTIFIC BACKGROUND

- Seeds were then cleaned, measured, weighed, dried and stocked at 4°C: Germination protocols were defined for 50 different species.
- More than 1,000 small seedlings, grown in our germination room belonging to different native species, were transferred to a nursery in Bejjeh, Jbeil to be used in our future campaigns near this region.
- More than 200 seedlings, grown in our germination room belonging to Juniperus, Cedrus, Abies, Quercus, were transferred to a nursery in Kfardebian to be used in our future campaigns in this region.
- More than 150 other seedlings were transferred to APJM (Association pour la Protection de Jabal Moussa) nurseries in accordance with our partnership agreement.
- Bulbs and rhizomes for more than 10 endemic or endangered species have been collected and stocked for ex-situ conservation as well as for a future botanic garden collection.

Moreover, before each plantation campaign with *Cedrus libani* or *Juniperus excelsa* trees, genetic tests were performed in the molecular biology laboratory of the Faculty of Sciences at Saint Joseph University to verify their Lebanese origin.

ANTHONY ROUKOZ

OUR LAB ASSISTANT



“Lebanon was blessed with one of the most diverse ecosystems in the Mediterranean region. Unfortunately, a lot of its natural environments are being threatened with habitat degradation and uncontrolled urbanization.

As the assistant of the conservation and germination laboratory of Jouzour Loubnan, having completed my Master’s degree in environmental sciences and management, it is a great honor for me to aid as much as possible in the protection and conservation of this one of a kind biodiversity using the ex-situ technique, meaning the conservation of the natural biodiversity outside of its natural habitat so it can stay safe until it is ready to be reintroduced to its homeland.

That is one of the purposes of the Jouzour Loubnan seed bank that is present in the laboratory, and it is my duty to make sure that it is constantly being upgraded with new species, and that the conservation conditions are always optimal for the seeds inside of it.

Of course maintaining the seed bank is one of my tasks inside the laboratory, however, developing a germination protocol for every species is a completely different task. Optimizing a germination protocol for a selected species is a complex but necessary step in the ex-situ conservation process, for it is crucial to know how to germinate a specific type of seed so we can be able to replant it in its natural habitat when needed.

One of our last achievements was the germination of the endemic *Iris sofarana* which is an endangered species that is only present in Lebanon. This type of germination is the first in the country, and allows us to protect and conserve this species. Now that we know how to germinate it, we are preparing a reintroduction plan to increase its numbers in its natural habitat thus fortifying the current population.

Another interesting process we do in the laboratory is preparing soil mixes and planting the germinated seeds at the end of the experiment. As for the seed stock, it is always updated using the new seed bank organizer program. We also do a lot of field visits to collect seeds, and increase the diversity of plant species that our seed bank has. It is really a wonderful experience working in the Jouzour Loubnan laboratory and participating in the conservation of the ecosystems of Lebanon. Plant physiology and ex-situ conservation are domains that I delved deep into during my training in Italy and my master’s thesis.

I look forward to fortify my knowledge in these domains even more and to use the new information that I learn to further optimize the conservation process being used, and to increase the number of species that we host in the Jouzour Loubnan seed bank in order to save more species from the many threats that they face, keeping Lebanon’s ecosystems green and full of life for the future generations.”





BCI TEAM



JOUZOUR LOUBNAN TEAM

INTRODUCING THE BCI - LEB TEAM (BIODIVERSITY CONSERVATION INITIATIVE - LEBANON)

One mission, one initiative, two different yet complementary approaches.

The Biodiversity Conservation Initiative was created with one main purpose: Biodiversity conservation and ecological restoration. This unique initiative covers the necessary aspects to save what is left of Lebanon's Biodiversity.

The two teams that are behind the success of this initiative are: team Jouzour Loubnan and team **CGP** (**G**enomic **C**haracterization of **P**lants)

- Jouzour Loubnan's main missions revolve around increasing the woodland area in Lebanon by planting indigenous species to restore degraded high mountain ecosystems and develop wildlife habitats; empowering the local community to protect, manage, promote and benefit from the projects as well as promoting environmental awareness of our natural resources amongst younger generations, locals and officials.
- CGP team mainly works on the genetic characterization of Lebanese endemic plants. The research uses genetic tools to study tree population and flowering plants, to understand their phylogeny and phytogeography and how contemporary and historical evolutionary processes affect them.

Recently, the USJ team added the animal component in its research, knowing the fact that the role of animals acting as pollinators or seed dispersers is obvious.

The results of this kind of research allow the definition of conservation policies and reforestation strategies that will optimize the survival of tree population in the face of climate change and high mountain ecosystem restoration. Biodiversity conservation is the finality of our research work and we committed to undertake field conservation since 2008.

Having two teams that work simultaneously under one umbrella is enough to make from BCI a great initiative that promotes biodiversity conservation and wildlife implication in ecological restoration.

INFOPRO



One stop shop for

- ▶ Contract publishing
- ▶ Content management
- ▶ Market research and polling
- ▶ Real estate studies
- ▶ Financial studies
- ▶ Financial intermediation
- ▶ Business events management

LEBANON OPPORTUNITIES	PROPERTIES by LEBANON OPPORTUNITIES
PROJECT Monitor	EASY BANKING by LEBANON OPPORTUNITIES
The Oil & Gas Handbook	BankTrak
THE BUSINESS HANDBOOK by LEBANON OPPORTUNITIES	THE GREEN BUSINESS HANDBOOK
Entrepreneur HANDBOOK	Retail Banking MONITOR
www.easybanking.com.lb	GEOMarkets GROUP INFOPRO
www.properties.com.lb	www.opportunities.com.lb
www.BUSINESSNEWS.COM.lb	www.automarket.com.lb
DATABANK.INFOPRO	www.jobs.com.lb

JOUZOUR LOUBNAN SEED BANK JOINS THE SOCIETY FOR ECOLOGICAL RESTORATION



The Society for Ecological Restoration (SER) is a global community that focuses on the science, practice and policy of ecological restoration and re-establishing an ecologically healthy relationship between nature and culture. The mission of ecological conservation is a global one, that's why the SER has created an international network through their website "www.ser.org" to be a hub for scientists, students, NGOs, and the private sectors.

We at Jouzour Loubnan are proud to announce that we are now a member of the SER through their network. Ecological restoration has always been one of our primary concerns, with the reforestation activities, and ex-situ laboratory conservation techniques that we conduct. Being part of the SER will give us the opportunity to evolve and share our techniques, so we could have a more potent methodology of conserving the endangered and threatened species of Lebanon.

The SER presents monthly webinars that are open to be spectated by its members, displaying an array of important ecological restoration techniques, scientific findings, conservation procedures, and other important experiments conducted by one of its members. Jouzour Loubnan has participated in the SER webinars, learning and applying the new methodologies learned.

Sharing scientific information through the globe is one of the very important concepts of the SER, because of it we can grow as a scientific community and create more effective conservation strategies so that the endangered ecosystems of Lebanon can have a long and prosperous life.



**SHOOT
FASTER
LIGHTER
SMARTER**

with the **EOS 200D**



SHOOT > REMEMBER > SHARE

Canon



**3 Year
Warranty**
valid until September, 30

interlink
An ITG company

T. 01-595 698

Live for the story_

PLANT WITH A SCIENTIFIC BACKGROUND

THE SIXTH MEDITERRANEAN FOREST WEEK

SOON IN LEBANON: 1-5 April 2019

THE SIXTH MEDITERRANEAN FOREST WEEK

ROLE OF MEDITERRANEAN FORESTS IN THE PARIS AGREEMENT: CHALLENGES AND OPPORTUNITIES

Following the success of the previous Mediterranean Forest Weeks, a new edition will take place in Lebanon on 1st April 2019 focusing on the Role of Mediterranean forests in the Paris Agreement. **The Sixth Mediterranean Forest Week (MFW)** will bring together a diverse set of actors to participate in one of the most dynamic fora on Mediterranean forests today. The biennial event facilitates cooperation amongst the research community, policy-makers and other relevant stakeholders by providing a common regional platform for dialogue. The event also promotes the importance of Mediterranean forests globally and calls attention to specific challenges faced by these forests. Participants include forest administrators, the scientific and academic community, the private sector, donors, civil society, environmental agencies and non governmental organizations.

The event will promote forest-based solutions at the landscape level as a way to implement the Nationally Determined Contributions (NDCs) of the Mediterranean countries.

Mediterranean forests can play an active role in addressing the changes and challenges that the Mediterranean region currently faces, including climate change, demographic development and migration, and energy transition. When connected to other sectors at the landscape level, the forest sector can play a role in the NDCs of the Mediterranean countries. The role of Mediterranean forests should be based on the due recognition of the social, environmental, economic and cultural value of the goods and services already provided by these forests. The sixth MFW will showcase forest-based solutions, promote enabling conditions to develop these solutions, and facilitate the mechanisms for scaling-up solutions.

OBJECTIVES

The sixth MFW will aim at showing how Mediterranean forests are important to mitigate climate change and implement the Paris Agreement, by addressing the following questions:



How Mediterranean forests contribute to global commitments related to climate change?



How important Mediterranean forests are for adaptation of people to climate change?



How important Mediterranean forests are for adaptation of water, agriculture, cities and other sectors to climate change?



How Mediterranean forests mitigate the effects of climate change?

LANGUAGES

The official languages of the event are English, French and Arabic with simultaneous translation available.

TARGETED AUDIENCE

Decision makers from the Mediterranean region; national and local governments; technical and scientific organizations, forestry experts and managers; forest owners; environmental organizations; NGOs; investors and key donors; young professionals; media; scientists; stakeholders from other sectors than forestry (water, agriculture, cities); climate negotiators and authorities in charge of NDCS.

CONTACTS

Pascale Milan (pmilan@agriculture.gov.lb)
 Nicolas Picard (nicolas.picard@fao.org)

AGENDA

	Mon 1 April	Tue 2 April	Wed 3 April	Thu 4 April	Fri 5 April
09:00	Registration	Session 23 Committee SM Adoption of the Agenda. Follow up recommendations of Session 22 Committee SM		Session 23 Committee SM Activities Working groups and other initiatives	Session 23 Committee SM Date and place session 24 SM and 7 MFW Closing
10:30	Coffee Break				
11:00	Session 23 Committee SM and 6 MFW Opening Ceremony Presentation of context and program	6 MFW Plenary Session n°2 Forest-based solutions for forest- related systems: case studies on how forests are linked to water, agriculture and cities	Field trip Cedrus libani forest	6 MFW Plenary Session n°4 Enabling conditions – Forest monitoring systems: what, why, and synergies	
13:00	Lunch				
14:30	6 MFW Plenary Session n°1 Where we stand Presentation of global commitments, NDC in the Med countries (status of implementation)	6 MFW Plenary Session n°3 Forest-based solutions: linking NWFP with the economy, participatory approaches		6 MFW Plenary Session n°5 Scaling up. Climate financing: current opportunities (GCF, GEF), PES, NFF – see recent developments from financing institutions on the Paris Agreement	
16:30	Coffee Break				
17:00 18:30	Side events	Side events	Local products degustation	Session 23 Committee SM Election of the Bureau High level Segment	
20:30				Gala Dinner/ Awards/Closing ceremony	

ORGANISING COMMITTEE

- Ministry of Agriculture of Lebanon
- Food and Agriculture Organization of the United Nations (FAO)
- Ministry of Agriculture, Fisheries, Food and Environment of Spain (MAPAMA)
- European Forest Institute-Mediterranean Regional Office (EFIMED)
- International Union for Conservation of Nature (IUCN)
- Plan Bleu pour l’Environnement et le Développement en Méditerranée (Plan Bleu)
- European forest genetic resources programme (EUFORGEN)
- Centro de Servicios y Promoción Forestal y de su Industria de Castilla y León (CESEFOR)
- Mediterranean Model Forest Network (MMFN)
- Association Internationale Forêts Méditerranéennes (AIFM)
- Mediterranean Forest Communicators Network
- Saint Joseph University of Beirut

The animal component in the ecological restoration projects is very often overlooked, even though the role of animals acting as pollinators or seeds dispersers is obvious. The self-sustainability of the restored ecosystem relies deeply on animals. Who are these animals? Are they still present in the surroundings of the restored area? Did their site frequentation and their populations after the restoration project increase?

In the framework of two pilot projects collaborating with Jouzour Loubnan, to support ecosystem restoration projects at national level, the mammals dispersing the seeds will be studied. The analysis of food webs and their dynamics facilitates the understanding of the mechanistic processes behind community ecology and ecosystem functions. In the framework of the ecological restoration approach, knowing what each animal species eats and through which animal species, plant species disperses their seeds, is crucial to help managers decide what to plant if they want to attract and promote wildlife. In addition, it allows us to define which plant needs which animals to disperse its seeds and ensure the ecosystem sustainability.

MIDDLE EAST PARTNERSHIP INITIATIVE (MEPI)

DECIPHERING MULTIDIMENSIONAL BIODIVERSITY

WEBS OF INTERACTIONS BEHIND THE SUCCESS OF ECOLOGICAL RESTORATION

Diet analysis is important to fully understand the biology of species and the functioning of the ecosystem. While ancient techniques such as visual analyses and early molecular approaches require intensive work and often lack resolution, recent DNA-based approaches potentially provide more accurate methods for dietary studies.

A suite of approaches has been used based on the identification of consumed species by characterization of animal DNA collected based on non-invasive sampling techniques. Non-invasive DNA analyses involve DNA collected without capturing animals. It means collecting DNA from items that animals leave behind, including feces (scat, dung), hair, feathers, saliva, or shed skin. DNA barcoding can be used for characterizing the functional value of specific frugivore species within diverse mutualistic assemblages. The project entitled “Deciphering Multidimensional Biodiversity Webs of Interactions behind the Success of Ecological Restoration”, funded by the US embassy aims at evaluating the effect of animal wildlife on the long-term sustainability of Lebanon’s restored forests. The Project considers the role of wildlife in ecological restoration processes, by studying what different animals disperse, in relation to plant species over different time frames.

This one-year-old project is considered as a pioneer in the region. In fact, we are constructing the first reference library of animal and plant species of Lebanon. This library is crucial since the existing data on biodiversity in the Middle East region are poor and sporadic; vary from one species to another. The assessment of species’ biodiversity and the dynamic of its population is indispensable especially for animals and the plant species that they consume. The results are very promising for Lebanon and the region. The reference library will be posted on international data base platforms.

To date, the metabarcoding technique for the animal scats had led us to the identification of 8 animal species and the plants they ate. This information will help us promote wildlife and its role in the restoration of Lebanon’s ecosystem. The outcome of the project could be used as a supportive tool for other ecosystem restoration projects and as a reference for the degraded ecosystems.



Figure 1 a) collecting scats



Figure 1 b) homogenizing scats material before DNA isolation

FOREST ECOSYSTEM RESTORATION INITIATIVE (FERI)

IDENTIFYING BIODIVERSITY-RELATED SUCCESS FACTORS OF ECOLOGICAL RESTORATION PROJECTS

The Project funded by CBD (Convention on Biological Diversity) COP decision XII/19, falls under the need to enhance the support and cooperation for promoting ecosystem restoration efforts of developing countries towards the implementation of the Strategic Plan for Biodiversity 2011-2020 and the achievement of the Aichi Biodiversity Targets, as well as decisions XIII/5 concerning putting in practice the steps contained in the short term action plan on ecosystem restoration.

The Project focuses on determining biodiversity-related success factors of ecological restoration projects in a biodiversity hotspot of Lebanon. This two year old project directly considers the role of wildlife in ecological restoration processes, by studying what different animals disperse, in relation to plant species over different time frames. Diverse plants that can sustain wildlife year round will be identified to promote the sustainability of the restored ecosystem and its natural regeneration. Given its novel character in associating different concerned biodiversity partners, this study will constitute a cornerstone to all subsequent reforestation actions in Lebanon and in the Eastern Mediterranean region. It will track implementation outputs, stakeholder engagement and budget expenditures.

The restoration pilot site for this project is located in Kfardebian. The site is divided into two areas. The first one is a fenced area with a surface of 65.8 ha and the other is a non-fenced one. A total of 6 plots, each of 10x10m were delimited depending on their exposition to lead the project on (table 1). Three out of those six plots are present in the fenced area and the other three are present in the non-fenced one. (Figure 1-2)

A flora assessment was conducted the first of every month in the 6 plots. The flora survey contains the species found in each plot, their frequency and dominance. Statistical analysis will be performed at the end of the collection season and compared site by site and season by season. After the Evaluation of the effect of fencing on biodiversity from the restored site, a selection of appropriate genetic resources to be used for reforestation will be conducted. Finally, after these two years are completed, we will host a roundtable to promote key results in discussions among different national focal points, and at relevant international meetings, show casing results and exchanging insights for areas facing similar challenges.

MEPI - FERI CONTINUED

Plot #	Latitude Y	Longitude X	Altitude (m)	Exposition	Description
1	34.001232	35.848433	2088	NE	fenced area
2	34.000118	35.846592	2093	W	fenced area
3	33.997972	35.848855	2078	SW	fenced area
4	34.003228	35.852749	2062	SW	non-fenced area
5	34.003233	35.852631	2027	NE	non-fenced area
6	33.996403	35.849805	2039	S	non-fenced area

Table 1: Six different plots in Kfardebian

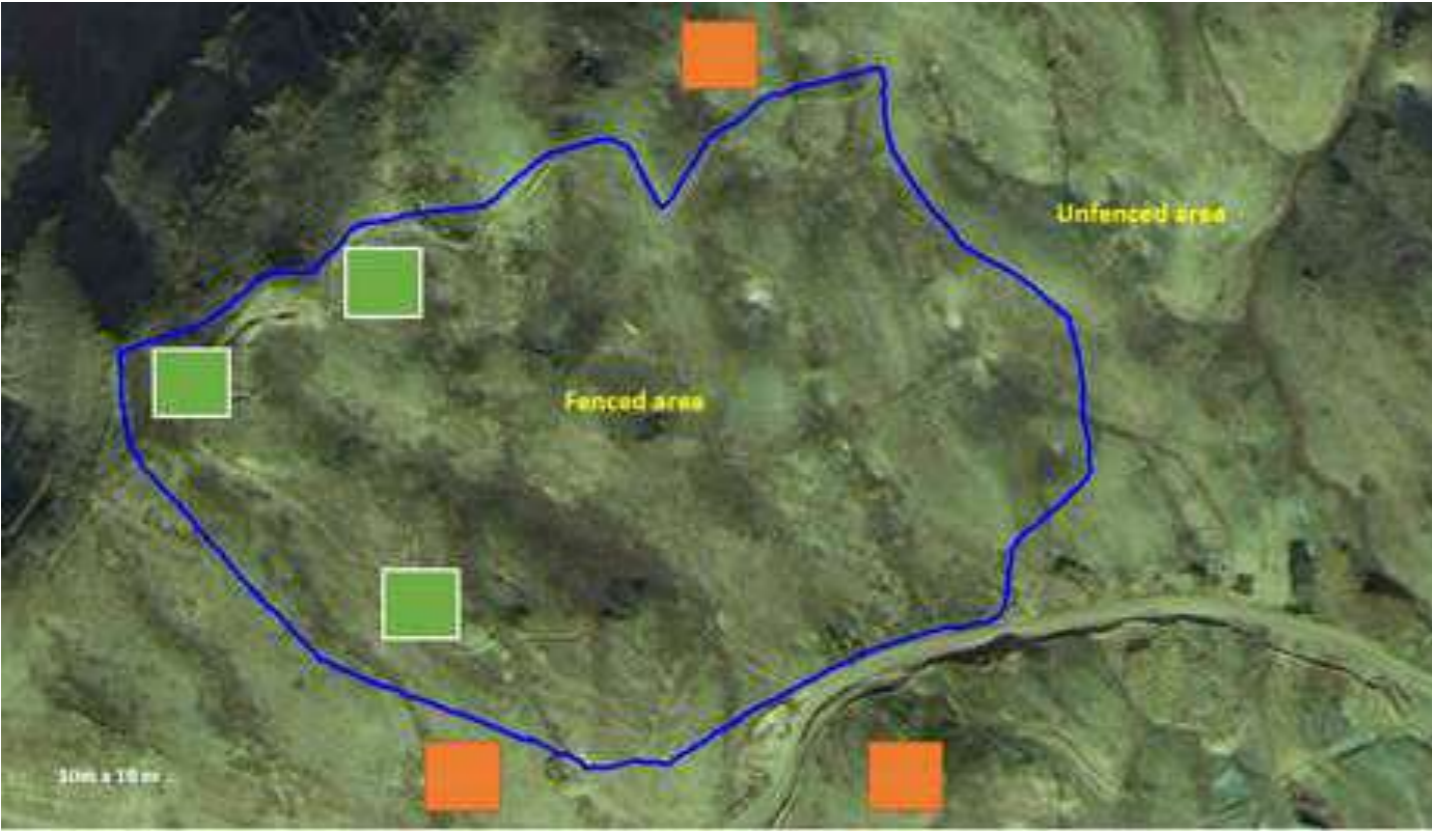


Figure 1 Distribution of the six plots in Kfardebian

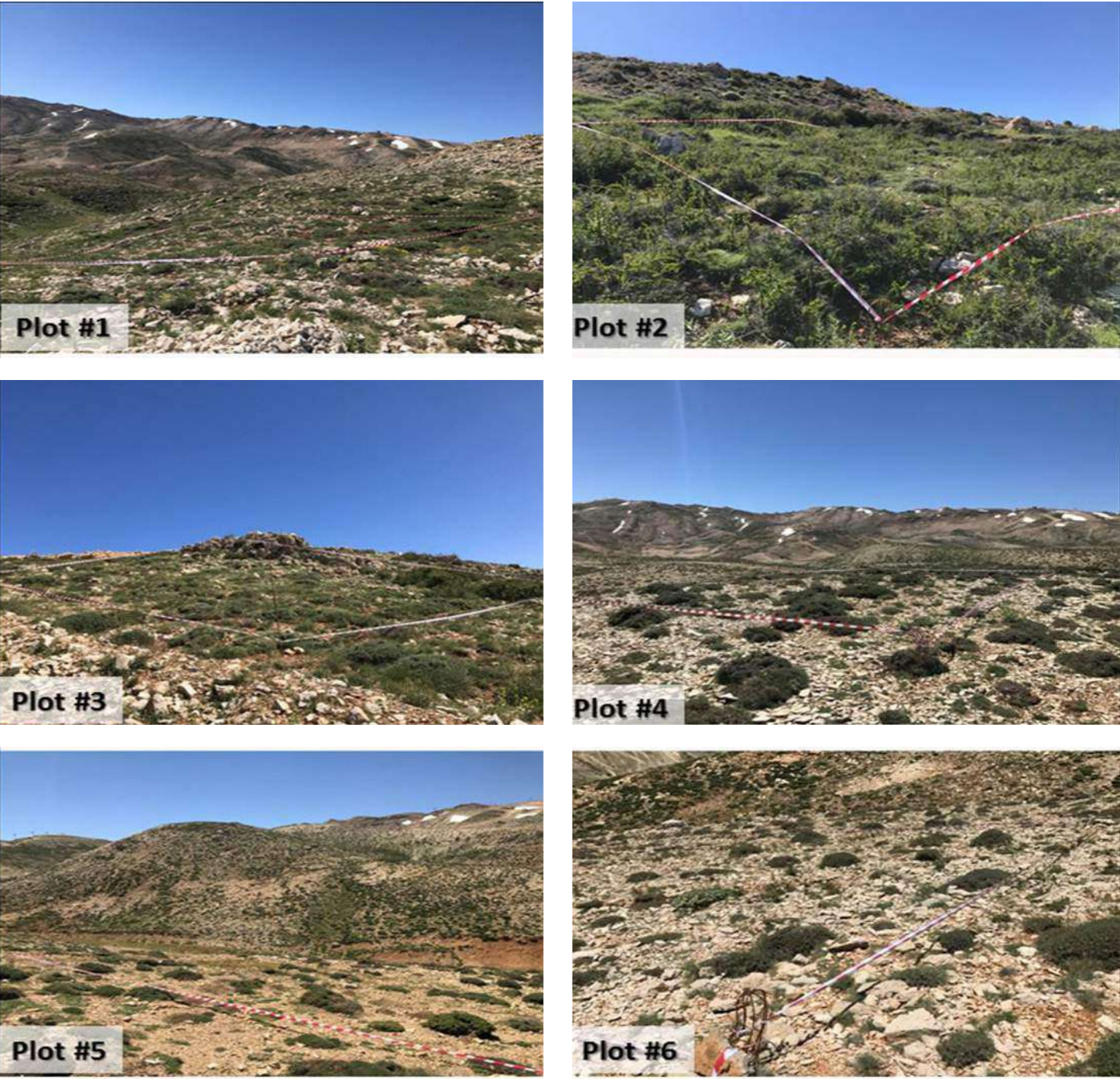


Figure 2: The six different plots monitored



CONFÉRENCE ANNUELLE DE LA CHAIRE DE L'ÉDUCATION À L'ÉCO-CITOYENNETÉ ET AU DÉVELOPPEMENT DURABLE (CEEDD)

La Chaire de l'Éducation à l'Éco-citoyenneté et au Développement Durable (CEEDD) de la Fondation Diane à l'Université Saint-Joseph a tenu sa conférence annuelle autour du thème de la diversité biologique et de la diversité culturelle, le 15 mai 2018. La conférence a été donnée par M. le Pr Bruno David, Président du Muséum National d'Histoire Naturelle de Paris (MNHN).

Cette conférence a été précédée par une table ronde intitulée : « La biodiversité et l'éco-citoyenneté dans une société multiculturelle », modérée par Pr Fadi El Hage. Les intervenants, Pr Magda Bou Dagher Kharrat, Pr Halima Kaakour et Pr Bruno David ont présenté la problématique de la dualité entre la diversité biologique et la diversité culturelle, qui fut pendant longtemps, l'objet de débats et de controverses parmi les communautés scientifiques, civiles, gouvernementales et organisationnelles, au Liban.

Dans son mot d'accueil, Pr El Hage précisa que « comme les écosystèmes naturels exigent une biodiversité pour être en équilibre, la société a besoin de variété culturelle » et que « dans un pays multiconfessionnel et multiculturel, comme le Liban, la « fragmentation écologique » se traduit également par une « fragmentation sociale » où l'autre, le concitoyen, seulement parce qu'il est différent, d'une autre couleur, d'une autre appartenance religieuse ou politique, d'une autre identité ou orientation, est perçu comme un danger et non comme un maillon fondamental de la biodiversité ».

De son côté, Mme Diana Fadel a mis en exergue l'importance de l'âme Libanaise, pilier du "7ème sens" citoyen, qui seul pourrait motiver le Libanais à apporter le changement. Mme Fadel a également souligné que le Développement Durable demeurera la base de salut pour le Liban dans sa lutte contre la pauvreté et la dégradation environnementale. Enfin, le R.P. Michel Scheuer a salué l'accord de coopération scientifique, d'échange et de partenariat entre le MNHN et l'USJ, à l'initiative du Département des sciences de la vie et des terres de la Faculté des sciences de l'USJ.

Suite aux mots d'accueil, le Pr Bruno David a pris la parole pour donner sa conférence intitulée « comprendre la biodiversité : où est le problème ? ». Après avoir présenté brièvement l'histoire et les racines de la biodiversité dans le monde, la conférence de M. le Pr Bruno David a exploré les différentes façons de percevoir cette biodiversité aux différentes échelles de l'organisation du monde vivant, pour arriver à se questionner s'il n'est pas déjà temps de parler de biodiversitéS (au pluriel) au lieu de biodiversité, vu la complexité des niveaux et des approches d'évaluation de celle-ci.

CEEDD



Ensuite, Pr David s'est penché sur la question du lien entre biodiversité et climat, ce « match déséquilibré » qui confronte le « Global » au « Local », le « Général » au « Spécifique », et « l'Universel » au « Particulier », pour enfin clôturer son intervention en soulignant le rôle du MNHN à Paris dans l'étude, la valorisation et la conservation de la biodiversité terrestre et aquatique.

La conférence a été suivie par un débat avec le public, qui, par son enthousiasme a témoigné de l'importance du sujet débattu, et par une exposition d'une vingtaine de posters scientifiques soigneusement préparés par les étudiants des différentes universités autour du thème de la biodiversité.

Le philosophe Aristote, de l'Antiquité, avait dit : « La nature a horreur du vide », mais la nature a aussi également horreur du l'uniformité, du monochrome et de la linéarité ; la société encore plus. D'ailleurs le nombre de participants à la conférence témoigne de l'importance de la thématique traitée.



BIODIVERSITÉ

Nouvelle étude de l'USJ : 3 %
du territoire libanais abrite
79 % de sa flore !

La première étude visant à identifier les zones importantes pour les plantes au Liban, celles qui ont une richesse botanique exceptionnelle, a été publiée dans le *Journal of Nature Conservation* en mars 2018.

Une carte définissant 31 zones importantes pour les plantes (ZIP) révèle aujourd'hui les zones prioritaires pour la conservation de la biodiversité. Elle constitue un outil de première importance pour protéger les zones menacées et développer des stratégies rationnelles pour la conservation au Liban. Cet outil est mis à la disposition des conservateurs, des municipalités et de toutes les autorités concernées.

Cette étude, dirigée par Magda Bou Dagher Kharrat, chef du département des sciences de la vie et de la terre à la faculté des sciences de l'Université Saint-Joseph (USJ), et financée par le « Critical Ecosystem Partnership Fund », a débuté en 2013 et a rassemblé 57 582 observations sur les espèces végétales au Liban. C'est la base de données la plus complète disponible à ce jour à l'échelle nationale.

Le Liban, considéré comme un point chaud de la biodiversité du bassin méditerranéen, se caractérise par une richesse floristique estimée à 2 612 espèces végétales, dont 108 sont endémiques (uniquement au Liban et nulle part ailleurs dans le monde). Cependant, l'urbanisation anarchique de la période de reconstruction post-guerre (1975-1991) ainsi que l'augmentation sans précédent de 30 % de sa population entre 2011 et 2013 ont largement contribué à la perte de biodiversité.

« Il est de notre responsabilité civique de protéger notre patrimoine naturel unique », a déclaré Magda Bou Dagher Kharrat. Dans un premier temps, son équipe a développé une méthodologie

personnalisée pour cartographier les ZIP dans la mosaïque des paysages du Liban. Leur approche combinait trois indicateurs : la richesse spécifique ; la valeur de conservation des espèces, y compris l'endémisme et la rareté ; et la valeur de la conservation de l'habitat. Magda Kharrat a souligné la découverte inattendue et frappante de l'étude. « Les 31 ZIP recensées ne couvrent que 3 % de la superficie du Liban, mais hébergent 79 % de sa flore et 80 % de ses espèces endémiques », dit-elle.

Les données collectées comprenaient des données historiques et récentes. Les données historiques étaient principalement extraites de spécimens d'herbiers collectés avant 1980 et rapportés dans la flore du Liban et de la Syrie par Paul Mouterde. L'Herbier du Muséum national d'histoire naturelle (MNHN, Paris) a contribué avec plus de 9 000 enregistrements pour la flore libanaise datant de 1828 à 1972. Certaines des données récentes ont été extraites de *La flore illustrée du Liban* par Tohmé et Tohmé, ainsi que de la base de données en ligne sur la flore libanaise (<http://www.lebanon-flora.org>) qui rassemble les observations de 30 contributeurs bénévoles. Dans le cadre de ce projet, 18 925 nouvelles données d'observation des plantes ont été ajoutées grâce aux explorations sur le terrain de Hicham el-Zein, coordinateur de ce projet.

Seules 26 % des ZIP recensées sont déjà désignées comme zones protégées. Mme Kharrat souligne le fait que de nombreuses zones ne profitent d'aucune protection gouvernementale légale et que des mesures de conservation doivent donc être prises urgemment car ces zones naturelles font face à une menace imminente d'urbanisation non réglementée.

IPA MAP
INDIGENEOUS
PROTECTED AREAS

النهار

الخميس 2018-03-08 العدد 26505

1

3% فقط من مساحة لبنان
تحتوي على 79% من ثروته النباتية

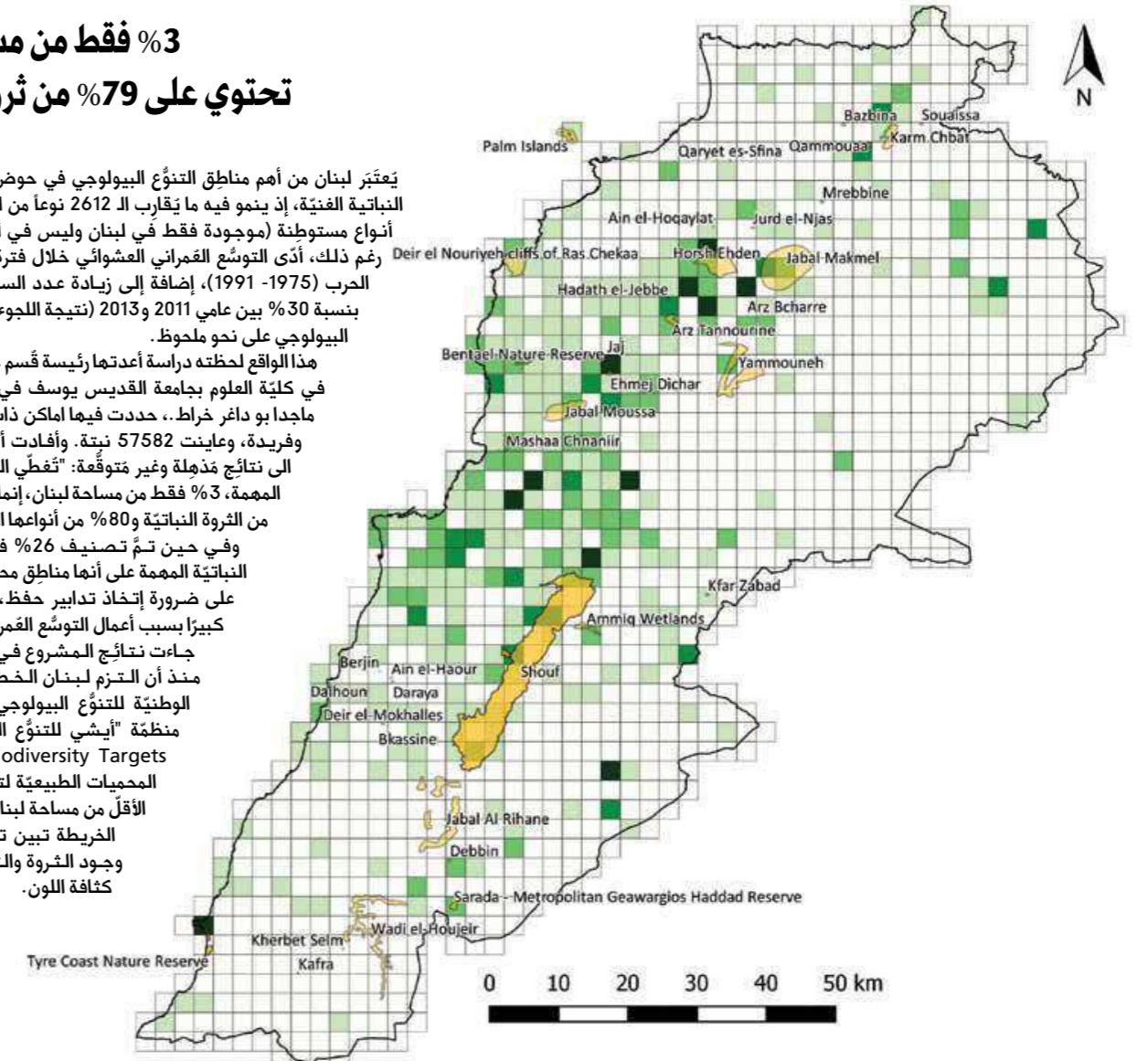
يُعتبر لبنان من أهم مناطق التنوع البيولوجي في حوض المتوسط بثروته النباتية الغنية، إذ ينمو فيه ما يقارب الـ 2612 نوعاً من النباتات، منها 108 أنواع مستوطنة (موجودة فقط في لبنان وليس في أي بلد آخر). وعلى رغم ذلك، أدى التوسع العمراني العشوائي خلال فترة إعادة الإعمار بعد الحرب (1975-1991)، إضافة إلى زيادة عدد السكان غير المسبوقة بنسبة 30% بين عامي 2011 و2013 (نتيجة للجوء) إلى خسارة التنوع البيولوجي على نحو ملحوظ.

هذا الواقع لحظته دراسة أعدتها رئيسة قسم علوم الحياة والأرض في كلية العلوم بجامعة القديس يوسف في بيروت، الدكتورة ماجدا بو داغر خراط، حددت فيها أماكن ذات ثروة نباتية غنية وفريدة، وعينت 57582 نبتة. وأفادت أن الدراسة خلصت إلى نتائج مذهلة وغير متوقعة: "تغطي الـ 31 منطقة النباتية المهمة، 3% فقط من مساحة لبنان، إنما تحتوي على 79% من الثروة النباتية و80% من أنواعها المستوطنة".

وفي حين تمّ تصنيف 26% فقط من المناطق النباتية المهمة على أنها مناطق محمية، شددت خراط على ضرورة اتخاذ تدابير حفظ، لأنها تواجه خطراً كبيراً بسبب أعمال التوسع العمراني العشوائي.

جاءت نتائج المشروع في الوقت المناسب منذ أن التزم لبنان الخطة الإستراتيجية الوطنية للتنوع البيولوجي للتلاقي وأهداف منظمة "أيشي للتنوع البيولوجي" (Aichi Biodiversity Targets) لزيادة مساحة المحميات الطبيعية لتصل إلى 5% على الأقل من مساحة لبنان بحلول 2030.

الخريطة تبين تلك الأماكن ونسبة وجود الثروة والتنوع فيها بحسب كثافة اللون.







**PROMOTE
ENVIRONMENTAL
AWARENESS**

AWARENESS OUTREACH



Christmas In Action Event



Ecole Notre Dame des Anges - Badaro



Festival du Romarin



Jezzine Festival



Lycee Officiel de Jezzine



Melkart



Rotary Club Beirut Cedars



Rovers 100 Scout



SSCC Bouchriyeh

AWARENESS SESSION	DATE	TARGET AUDIENCE
UniversCiel - 3 ^{ème} édition Festival d'Astronomie de Fleurance au Liban	19 Oct 2017	schools students - festival visitors and participants
Christmas In Action Event	13 to 17 Dec 2017	thousands of festival visitors and participants
Ecole Notre Dame des Anges - Badaro	8 Jan 2018	45 students of 3rd secondary class
Rotary Club Beirut Cedars	7 Mar 2018	RC Beirut members
Melkart college	15 and 16 Mar 2018	students
Lycée officielle de Jezzine	28 Mar 2018	first secondary class - 42 students
SSCC Bouchrieh	18 Apr 2018	110 students EB7
Festival du Romarin - Chewye	7 and 8 Apr 2018	a hundred of habitant of Chewye and participants in the festival
Lwis CiS	3 May 2018	35 students of KG3 class
Garden show and spring festival - hypodrome de Beirut	30 May to 2 June 2018	festival visitors
Rovers 100 - Scout	1 Jul 2018	Scout Groups
Jezzine Festival	5 Aug 2018	festival visitors



Garden Show and Spring Festival



UniversCiel

PLANTATION DAYS WITH STUDENTS



AUB Rally Paper



CTI



USJ



USJ



AUB Rally Paper



Jezzine Youth Club



Melkart



Notre Dame de Louaize

PLANTATIONS WITH SCHOOLS	DATE	SITE	NUMBER OF PARTICIPANTS
Notre Dame de Louaize	4-Nov-17	Kfardebian	50 students with teachers
CTI	8-Nov-17	Kfardebian	100 students with teachers
Jezzine Youth Club	12-Nov-17	Jezzine	30 participants
USJ (Beirut, Sud, North)	19-Nov-17	Jaj	130 USJ students, doctors and USJ team
Melkart School	28-Nov-17	Kfardebian	54 students and teachers
Ecole officielle de Sarada	16-Dec-17	Sarada	100 students with teachers
Saint coeur Qlayaat			
AUB Rally Paper	22-Apr-18	Chabrouh	8 teams



Ecole officielle de Sarada

Collège Melkart



L'écocitoyenneté est l'identité que le **Collège Melkart** implante en chacun de ses élèves à travers son club **Les Génévriers de Melkart** et son engagement dans le Green Schools Program. Son partenariat avec **Jouzour Loubnan** est donc inévitable pour :

- *Découvrir*
- *Ecouter la vie*
- *Respecter la vie*
- *Agir*

Le Club «**Les Génévriers de Melkart**» ramène au goût du jour la découverte de soi et des autres. Sur les 15 années que dure leur scolarité au **Collège Melkart**, les élèves auront parcouru le Liban, auront découvert ses coutumes, sa diversité, ses reliefs, sa géographie, se seront immergés dans les traditions du terroir comme dans les silences des grands espaces. Ces parcours seront des classes sans murs, où les disciplines académiques seront plus que des mots vécues à travers des gestes, des spectacles, des aventures.



... au cœur du développement durable

Le **Collège Melkart** entre dans une nouvelle ère, où éducation écocitoyenne se marie avec un nouvel engagement écologique.

Les Génévriers de
MELKART



Les pieds sur terre,
Les pieds sur terre, l'esprit ouvert au monde
l'esprit ouvert au monde



OUR SITE CONTROLLER IN THE USA



INTERNATIONAL FOREST LANDSCAPE RESTORATION Training in the USA, Oregon state

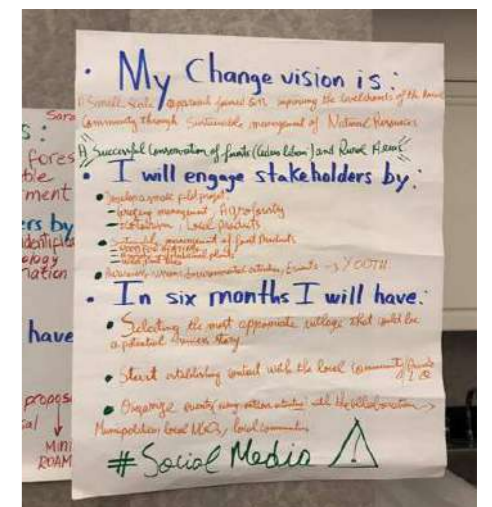
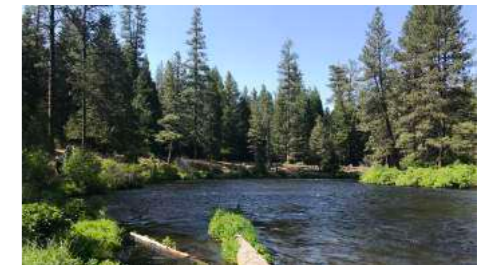
Tony Chahine, Jouzour Loubnan's site controller, participated to the International Seminar on Forest Landscape Restoration, financed by the US Forest Service International Programs (IP) and the International Union for Conservation of Nature (IUCN), within the framework of the Lebanese Reforestation Initiative (LRI), between May 31 and June 22, 2018, in Oregon (USA).

The Seminar gathered 26 participants from 22 different countries and aimed at assessing forest landscape restoration opportunities and evaluating key elements for developing and implementing forest landscape restoration plans in the different country scenarios. Through field visits, class and field instructions, lectures endorsed by a recognized experts and facilitated discussions, participants learnt about assessment tools and methodologies, key factors for success, and tools and best practices for landscape-scale restoration. Participants also explored different approaches to collaboration, conflict management, stakeholder participation and partnerships, and valuing and financing of landscape-scale restoration activities.

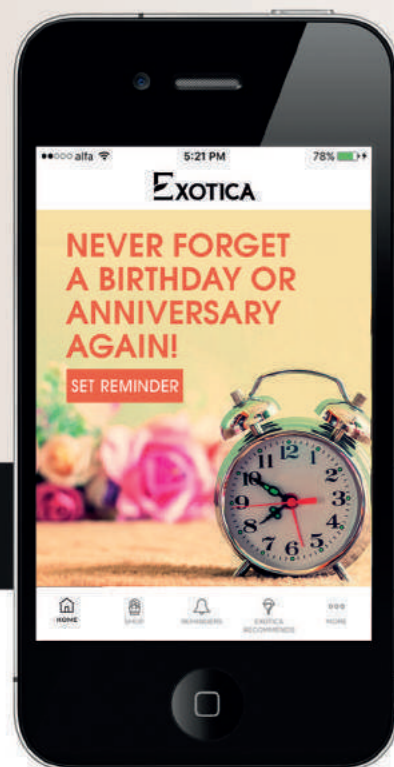
This seminar exposed a great impact on the know-how of the implementation of this new approach, especially in Lebanon, by taking it up in two important categories: ECOLOGICAL INTEGRITY + WELL-BEING HUMAN and summarizing this new method in six main topics:

- Restoring to meet current and future uses:
 - Thinking long-term over large areas
 - Learning and adapting new restoration techniques
- Restoring multiple forest functions and productivity
- Balancing local needs with national and global priorities
- Using a package of diverse restoration strategies to match each situation
- Engaging stakeholders in the assessment and planning phases for any reforestation project in order to build and keep the trust
- Engaging the young generation and involve the of education and interpretation in forest landscape restoration

Forest landscape restoration is the key for integrative reforestation approach that goes beyond planting trees to a sustainable restoration of degraded deforested landscapes.



forgetting is no longer an excuse... download the App!



reminders | message suggestions | recommendations
online orders | and more...



RLL

لبنان الحر
102.3 - 102.5 FM

الإذاعة التي تصنع الحدث
سياسة، إجتماعية، ترفيهية، وثقافية

إذاعة لبنان الحر
لكل الأجيال ولكل الأذواق

102.3 - 102.5 F.M

Régisseurs Exclusifs : **Interadio**

Tel: (01) 561 639/40/41/42/43 - Fax: (01) 560 660

E-mail: info@interadio.com.lb

#IWALKEDTHELOOP

يا Hike يا بلا



f t i WWW.JBALMOUSSA.ORG

PROMOTE ENVIRONMENTAL AWARENESS

OUR LAB ASSISTANT IN ITALY

Living in a world where biodiversity is constantly being threatened, has pushed science to take a step forward and focus on specific laboratory techniques to conserve and protect endangered species.

Ex-situ conservation concentrates on creating a support for species survival by preserving the selected species outside their natural habitats, where they are safely stored and prepared for reintroduction.

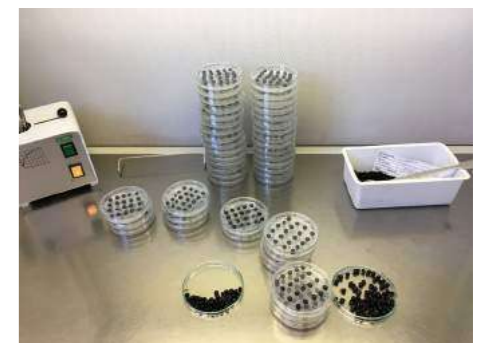
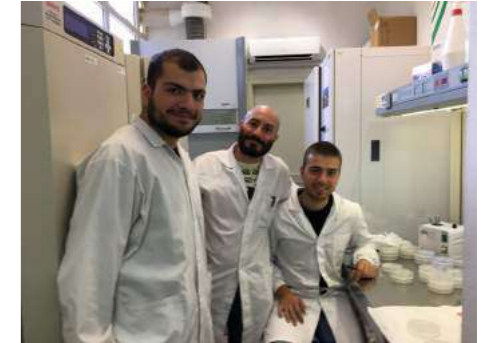


To better understand this concept, the **Centre of Mediterranean Cooperation of IUCN** (as part of the IPAMed project), in collaboration with the **Hortus Botanicus Karalitanus**, University of Cagliari (UNICA) - Sardinia, Italy (as part of the CAREMEDIFLORA project) has conducted a training course in the Biodiversity conservation center in Cagliari.

I was selected to be part of this training course, learning even more about the acute strategies of seed conservation and protection. Many experiments were conducted on stored seeds in botanical labs in order to understand their life cycle and thus proceed to their conservation. We learned about the many different dormancy types and stages of seeds and how to awaken each one using specific treatments. Seed collection, cleaning, testing, and storing were all performed. New equipment were also used to test seed lots like high precision scanners and morphometric seed analysis which can calculate the exact perimeter of the seed surface making the process of comparing them to other species of seeds a more accessible and efficient technique. This process is very important and can help in the identification of plant species using only seed size metrics instead of the whole plant.

As the laboratory assistant of the conservation and germination laboratory of Jouzour Loubnan, I will use all of what I've learned to evolve and develop the methods and the protocols being used in the laboratory. The seed conservation procedures used in the Jouzour Loubnan laboratory were upgraded to include additional technical steps like seed print scanning, morphometric seed analysis, and new pressure capsule bottles to better preserve seed quality.

The valuable information learned during my two weeks training period will help us to apply better seed conservation methods and create better seed germination protocols as well as publish new and important results about ex-situ conservation in the future.



roll camera

roll sound

...and ACTION

102 PARTNERS	541 CAMPAIGNS	115 PRODUCTIONS
56 CIVIC CONTRIBUTIONS	23 SECTORS	8 COUNTRIES
4 GLOBAL AWARDS	6 REGIONAL AWARDS	9 LOCAL AWARDS
5 PHENOMENAL YEARS	<i>AND SO...THE GREEN Adventure CONTINUES</i>	PHENOMENA





OTV

take a ride on the green side



صغار الوقت

مع مارسيل غانم

mtv





EMPOWER OUR COMMUNITIES

MEET OUR KEY PARTNERS:
THE NURSERIES

AKIKI FOR AGRICULTURE



Rooted since 1985, Akiki For Agriculture is being in the core of Agriculture and Forestry in all its branches, from pest control, landscaping and nurseries.

Thousands of native seedlings are grown, in collaboration with nature, every year in our nurseries in Kfardebian and Jeita, as well as providing agricultural materials and technical assistance to Jouzour Loubnan reforestation sites.

“A society grows great when old men plant trees in whose shade they know they shall never sit”

10 years of living the message, 10 years of faithful partnership with Jouzour Loubnan, and many more years yet to come, helping you achieving your noble mission of promoting sustainable forestry in Lebanon.

Tel/Fax: +961- 09710419
E-mail: akikiagri@hotmail.com

ASSOCIATION FOR FORESTS, DEVELOPMENT AND CONSERVATION



AFDC, a local NGO established in 1994, strives to achieve sustainable development and conserve natural resources. Looking back at its rich reforestation experience, as well as that of other major stakeholders in the country, AFDC upgraded its reforestation skills and know-how in collaboration with experts in the field.

As of 2009, the organization began a transition from mere reforestation towards the more holistic restoration approach to regain the ecological services the forests are able to provide. Lebanese forests are composed of a vast array of trees, shrubs and herbaceous plants; therefore the production of forest seedlings that mirror at least part of this diversity is a priority for the NGO.

AFDC operates 5 nurseries, of which:

- Ramlieh: established in 1995 and upgraded continuously ever since. It currently produces over 120,000 seedlings, has a modern irrigation system, seed storage facilities and a warehouse.
- Jdeidet Chouf: established in 2011, is the largest privately-owned forest tree nursery in Lebanon with a production capacity over 1 million seedlings.

It has several sections and terraces in addition to a large greenhouse, a storage shed and a modern irrigation system. Currently, over 200,000 seedlings are produced there.

- Three small nurseries in Aandqet, Mimes and Ras el Maten.

AFDC acquired the knowledge to produce over 30 native species in 2009 and continues to develop its skills to meet the complex needs of national restoration projects. AFDC is also a member of the CNTPL, the national reference for best practices in native seedlings production.

In 2013, AFDC began its collaboration with Jouzour Loubnan that developed into a strong partnership based on mutual interest in the development of best practices in reforestation and landscape restoration.

In addition, Jouzour Loubnan procures a significant proportion of native seedlings for its outplanting projects from the AFDC nurseries.

Tel/fax: + 961 1 89 84 75 / 6 - Tel: +961 3 84 84 12
E-mail: afdc@afdc.org.lb - Website: www.afdc.org.lb

JABAL MOUSSA UNESCO BIOSPHERE RESERVE



We, at the Association for the Protection of Jabal Moussa, are growing trees from our own seeds - sowing seeds that we collect ourselves from Jabal Moussa UNESCO Biosphere Reserve.

We are growing seedlings for a purpose - being committed to conservation, we grow endangered and rare species from our mountain with the aim of perpetuating and expanding their presence.

We are growing 40,000 seedlings per year in three native tree nurseries in villages surrounding Jabal Moussa, contributing to our dual mission of conservation and development.

We are growing seedlings of high quality - seedlings that demonstrated high survival rates when planted in the wild by nationwide reforestation organizations such as our faithful partners Jouzour Loubnan.

On the 10th anniversary of Jouzour Loubnan, we would like to highlight our unique partnership that started 9 years ago, when both young organizations (APJM and JL) had been established for a year, and saw that the way forward in conservation is through partnership and collaboration.

From that time onwards, we provided JL with thousands of seedlings every year, and we received their support to improve our production and our own planting techniques.

On this special occasion, we would like to wish Jouzour Loubnan great success in achieving their mission, for the sake of our natural heritage.

All the best for many years to come!

Tel/Fax: +961 (0)9 643 464 - Mob: +961 71 944 405
Email: info@jabalmoussa.org - www.jabalmoussa.org



مشتل الكروم الحرجي دير الأحمر



بدأت المسيرة مع جمعية جذور لبنان سنة 2011 وبالتنسيق مع بلديات شليفا وبتدعي حيث تمت زراعة أكثر من 10,000 غرثة من أصناف الأرز واللزاب والسنديان والزرور واللوز وغيرها. بعد الشراكة والثقة التامة بيننا استمر العمل لغاية العام الحالي من زراعة نصوص جديدة وصيانة مواقع التحريج. وستستمر هذه العلاقة لزيادة والمحافظة على الغطاء الحرجي في جبال لبنان.

- تم تحديث وتطوير عملية الانبات والزرع بواسطة عبوات وحاويات مما خفف كلفة الانتاج مع انتاج أغراس سليمة ذات نمو اخضراري من أصناف اللزاب، السنديان، الارز اللبناني والشوح اضافة الى الصنوبريات.
- إلى أن أصبح المشتل ينتج /50/ خمسين ألف غرسة حرجية سنوياً وهو قادر على انتاج أكثر من 500 الف غرسة ، ولكن بسبب عدم وجود جهات تسويق اعتمدنا تخفيض الانتاج الى أدنى مستوى بنسبة 10 ٪ فقط من القدرة المتاجة .
- زار المشتل وزراء ونواب ومدراء عامون ومهتمين وجمعيات بيئية الى أن أصبح ملتقى لكل زائر لسهل البقاع - (اهراءات روما) . كما انه حصل على شهادات تقدير لأفضل الممارسات والانتاج للأغراس الحرجية وأيضاً مشتل الكروم عضو مؤسس في الجمعية التعاونية الزراعية لمنثجي الأغراس الحرجية في لبنان.

وسط سهل البقاع منطقة شبه صحراوية - قاحلة ، أنشأ مزارعون من منطقة دير الأحمر مشتل حرجي - على عقار مساحته 10,000 م² على طريق بعلمك - دير الأحمر.

البداية كانت باعتماد طريقة تعبئة أكياس نابلون سعة ليتر ومن ثم زرعها بذور - صنوبر مثمر سنديان ارز ولزاب، فريق عمل أصحاب المشتل من آل فخري مع أقارب لهم عملوا في مجال:

- التحريج
- تحضير الموقع
- وحفر الجور بواسطة اليد العاملة وفي المواقع المنبسطة بالأليات
- شق جلول

ومن ثم القيام بأعمال التحريج في العديد من المواقع بداية مع وزارة الزراعة انتاج شتول وزرعها وصيانتها في مختلف المناطق (البقاع - الشمال - جبل لبنان والجنوب) ومع وزارة البيئة عام 2002-2005 زرع أكثر من 200 الف غرسة حرجية في مواقع مختلفة.

Tel: +961 3 651 570
Email: fakhry.tony@hotmail.com

NATIVE NURSERIES



Native Nurseries is a leading native trees and shrubs nursery located in Ramleyeh-Alay founded in 2010, our core objective is to produce the best quality seedlings that are able to survive our harsh environmental conditions, we always share experience with our partners on the best practices to produce and plant our forests.

Every year we produce more than eighty thousand seedlings of almost all of the forty tree species native to Lebanon, we worked with Jouzour Loubnan since 2013 in a mutual collaboration to provide together the best planting practices in order to reforest Lebanon.

We are proud of being part of the successful growth of the 300,000 planted native trees with Jouzour Loubnan, because we believe it's because of both the quality of the seedlings and the effort of Jouzour Loubnan team, this huge achievement happened.

We will always work hand in hand with this wonderful team to achieve the best to our country.

Tel: +961 3 311772

Email: khaled.sleem@native.com.lb

NATIVE TREE NURSERY OF TANNOURINE NATURE RESERVE



The native tree nursery of Tannourine is located at Tannourine Cedar Forest Nature Reserve Entrance. It was founded in 2011.

Our mission is to ensure forest sustainability through the production of high quality forest and plant seedlings. The main objective is to produce native forest and plant seedlings to protect the biodiversity of the Tannourine Cedar Forest Nature Reserve.

Our total producing quantity of seedlings is between 7000 and 10000 per year (Cedar, Oaks, Juniper and Maples).

Two years ago, we started collaboration with Jouzour Loubnan to produce more quantity of Cedar trees for reforestation projects in the surrounding forests of Tannourine Reserve such as Jaj Cedar Forest.

It's a great initiative to increase the forest cover in Lebanon since the creation of Jouzour Loubnan through the sustainable reforestation projects.

As native tree nursery producers, we would like to continue the collaboration together for reforestation and experiments to produce the native threatened species (*Juniperus drupacea* and other native plants such as *Paonia...*)

Mob: +961 3 223428 - Tel/Fax: +961 6 500550

Emails: challitah.tanios@gmail.com - info@arztannourine.org
www.arztannourin.org

THE FRIENDS OF THE CEDAR FOREST COMMITTEE



غرس حوالي ١١٠,٠٠٠ أرزة مولدة في هذه المشاتل ضمن مساحة ٤,٣٨٠,٠٥٢ متراً مربعاً عن طريق العرابيات الفردية والجماعية والمؤسسات. ونذكر أهمها: عرابية السيد ألفريدو حرب حلو، عرابية بنك البحر المتوسط، عرابية الهيئة الوطنية للمرأة، عرابية مشروع التحريج في لبنان...

إنشاء برك لتجميع مياه الشتاء لري جميع الشتول بطريقة منتظمة وعملية.

إنشاء المرصد البيئي المكون من طبقتين لتأمين خدمات بيئية كصالة محاضرات وندوات، ومعرض للحجرات والحشرات الموجودة في منطقة جبة بشري والجوار واستقبال البعثات العلمية.

هذه المشاريع تم تنفيذها عبر شبكة من العلاقات مع كافة الأفرقاء اللبنانية الخيرة التي دعمت مادياً ومعنوياً. وكل هذا كان نتيجة التزام اللجنة الحياتي الإيجابي على قاعدة أن الأرز هو رمز كل لبنان ومن واجب هذا الكل الإهتمام بالحفاظ عليه وما زالت اللجنة حتى اليوم تهتم بغابة أرز الرب وتقوم بإنتاج الشتول وتزرع المناطق الجرداء.

إن غابة أرز الرب، حسب بعض العلماء المختصين، هي أم غابات الأرز في العالم نظراً لقدم شجرها، التي تجتاز أعمارها الألفي سنة. ونظراً لتجدر غابة أرز الرب في لاوعي اللبنانيين عامةً والبشراويين خاصةً، كان الخامس من آب عام ١٩٨٥ تاريخ الإنطلاق لحفنة من المخلصين الذين اجتمعوا سويةً تحت إسم « لجنة أصدقاء غابة الأرز » لإنقاذ هذه الغابة والحفاظ عليها. ولأن الغابة الدهرية تتوسط مساحة صحراوية جرداء تزيد على ١٥٠٠ هكتار، كان لا بد من إنشاء محمية الأرز-قاديشا بهدف إعادة التوازن الطبيعي المطلوب عبر مشروع بيئي متكامل يتضمن الخطوات التالية:

• إنشاء ثلاثة مشاتل لتوليد الشتول من بذور أرز الرب (Cedrus LIBANI). الأول، سنة ١٩٩٧ وبتمويل من وكالة المدى الأخضر الفرنسية «إيل دو فرانس»، والثاني سنة ٢٠١١ بدعم من مؤسسة التحريج في لبنان (LRI)، والثالث سنة ٢٠١٤ وهو الأحدث في منطقة الشرق لتوليد الشتول من بذور أرز الرب تقدمت من مؤسسة السيد ألفريدو حرب حلو بإنتاجية تصل إلى مئة وعشرين ألف غرسة سنوياً.

شكراً لمساهمتكم

A SINCERE APPRECIATION TO OUR GENEROUS PARTNERS

DIAMOND

BASSOUL
HENEINE SAL

الجديد



JGROUP

PLATINUM

LNASHRA



Tree Ad



le charcutier

المستقبل

mtv

OTV

GOLD

keepit
simple
communications

GroupPlus

DOUZE Networks

WORKSHOP
PRODUCTIONS

SILVER

ma.sa.ha
Carioux de Fleurs ...

BLCbank
FRANSABANK group

PHENOMENA

Interadio
Regie de Publicite

CIMENTERIE
NATIONALE
اسمنت السبع
AL SABEH CEMENT



INKIND DONATION

Mondanité

2018

- CEDRUS LIBANI GERMINATION PROTOCOL**
GERMINATION OF *IRIS BISMARCKIANA* AND *IRIS SOFARANA*
- JOUZOUR LOUBNAN SEED BANK JOINS (SER) SOCIETY FOR ECOLOGICAL RESTORATION
- LAUNCHING OF A NEW SEED STOCK ORGANISER
- LAUNCH OF PARTNERSHIP WITH AFD

2017

- 42,141 PLANTED TREES** SARADA JAJ BCHARRE
- GERMINATION OF *JUNIPERUS DRUPACEA*
- JOUZOUR LOUBNAN SEED BANK JOINS GENMEDA INTERNATIONAL SEED NETWORK
- INITIATION OF THE SCHOOL PROGRAMME

2016

- 27,836 PLANTED TREES** JEZZINE
- DISCOVERY OF NEW SPECIES OF JUNIPER IN LEBANON *JUNIPERUS POLYCARPOS***
- VICE PRESIDENT: MEMBER OF THE CONIFER SPECIALIST GROUP & THE SPECIES SURVIVAL COMMISSION
- 40 MILLION-TREE PROGRAMME - ARDP** FUNDED BY THE EUROPEAN UNION

2015

- 26,505 PLANTED TREES**
- ECOPLANTMED INTERNATIONAL CONFERENCE FOR ECOLOGICAL RESTAURATION IN THE MEDITERRANEAN REGION
- LAUNCH OF THE adoptcedar.org PROGRAMME

2014

- 43,286 PLANTED TREES** DAMOUR BALAA
- LABORATORY EXPANSION COMPLETED FINANCED BY THE EUROPEAN UNION AND JOUZOUR LOUBNAN
- LARGEST PLANTATION CAMPAIGN ORGANISED WITH 600 'ROUTIERS' FROM 'SCOUTS DU LIBAN'

2013

- 31,374 PLANTED TREES** ZAAROUR
- ELABORATION OF A PLANTATION PROTOCOL SEED SOWING TEST WITH UNDP
- LAUNCH OF LEBANON-FLORA.ORG A FREE ACCESS DATABASE OF LEBANESE PLANT SPECIES INFORMATION

2012

- 63,939 PLANTED TREES** EBL EL SAKI EHDEN MTEIN
- LAUNCH OF THE FIRST NATIONAL AWARENESS CAMPAIGN
- INITIATION OF THE CAR DEALER PROGRAMME

2011

- 24,943 PLANTED TREES** HARF SHLIFA BTEDII MARKABA SHAQRA MAYSS EL JABAL MAJDAL SILM
- CREATION OF THE REFORESTATION UNIT OF THE OPERATION 7^{EME} JOUR DE L'USJ
- INITIATION OF THE REAL ESTATE PROGRAMME

2010

- 21,725 PLANTED TREES** AYNATA (SOUTH) BTEDDINE
- LAUNCH OF A SCHOOL COMPETITION ON BIODIVERSITY WITH MORE THAN 400 STUDENTS

2009

- 8,484 PLANTED TREES** EHMEJ AL AKOURA BKOSTA TARCHICH
- OPENING OF LABORATORY FOR SEED GERMINATION & CONSERVATION

2008

- 2,008 PLANTED TREES** KFARDEBIAN CHABROUH

BORN



JOUZOUR LOUBNAN PLANTS, NURTURES AND PROTECTS EACH AND EVERY TREE



Creditbank^{S.A.L.}

Nature nurtures

A wiseman said:

“We have not inherited this earth from our parents to do with it what we will. We have borrowed it from our children and we must be careful to use it in their interests as well as our own.”

Embracing nature and safeguarding our environment are at the core of a nation's responsibility to preserve the wellbeing of future generations.

At Creditbank, we are committed to supporting this global responsibility.

creditbank.com

